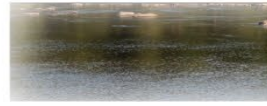




# Welcome

**WIFI: OKI-Guest**  
**Pass: #R1verB0at**





# Welcome

Mark Policinski  
CEO, OKI





# Announcements



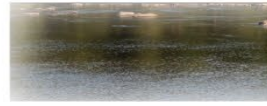


# Take our Strategic Regional Policy Plan Survey

**OKI.org**  
by March 31<sup>st</sup>







# 2023 Great Tree Summit

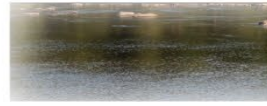
**Saturday, February 25, 2020**  
**8:00 am to noon**



**Location: Ft. Thomas Tower**  
**Park Mess Hall**  
**801 Cochran Ave, Ft. Thomas, KY**

**[Takingroot.info](http://Takingroot.info)**





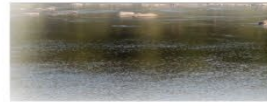
# OKI STBG/TA Project Application Workshop

March 7, 2023 Following ICC Meeting  
Approx 10:15 am

Andy Reser  
[areser@oki.org](mailto:areser@oki.org)

Summer Jones  
[sjones@oki.org](mailto:sjones@oki.org)





# Public Workers' Tree Seminar

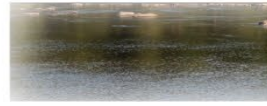
March 9, 2023

Kenton County Extension  
Office

[Nkyurbanforestry.wildapricot.org](http://Nkyurbanforestry.wildapricot.org)







# David J Allor Planning & Zoning Workshop

**DAAP** – University of Cincinnati  
**March 10, 2023**

**[ohiopanning.org](https://ohiopanning.org)**





# OKI Population Projections Update

Michael Outrich

OKI Senior Planner / Demographer



# Background

- ▶ Updated population projections inform:
  - ▶ The OKI 2050 Transportation Plan
  - ▶ OKI's Travel Demand Model



# I am looking for your input on:

- ▶ New or ongoing residential projects that are:
  - ▶ Proposed, Under Construction, or Recently Completed since 2020
  - ▶ Number of units
  - ▶ Type of Development (Single family / Multifamily)
  - ▶ Anything 5 Units or More
- ▶ Examples of interest include:
  - ▶ Office to Residential Conversions
  - ▶ New Subdivisions / Developments
  - ▶ Multifamily / Mixed Use projects



# Request for Assistance

- ▶ OKI Counties which cover townships or unincorporated areas
- ▶ Cities / Villages with several active residential development projects



# Thank You

Contact:

Michael Outrich, Senior Planner/Demographer

513-619-7678

[moutrich@oki.org](mailto:moutrich@oki.org)

# Strategic Regional Policy Plan

2023  
UPDATE

HOW do WE **GROW** From Here?  
Strategic Regional Policy Plan

# STRATEGIC REGIONAL POLICY PLAN: *2023 REVISIT*



Transportation



Public  
Facilities



Natural Systems



Economic  
Development



Housing



Land Use

# *Key Concepts*

- Land Use decisions are best made at the **most local level.**
- Continuously addressing 4 Questions:
  1. *Where are we as a region?*
  2. *Where are we going?*
  3. *Where do we want to go?*
  4. *How do we get there?*



- Local Comprehensive Planning is a Common Theme of the SRPP
- Best Practice Tools and Guides are Needed and Useful at the Local Level
- OKI Integrates SRPP Criteria in the Regional Transportation Prioritization Process



# TIMELINE

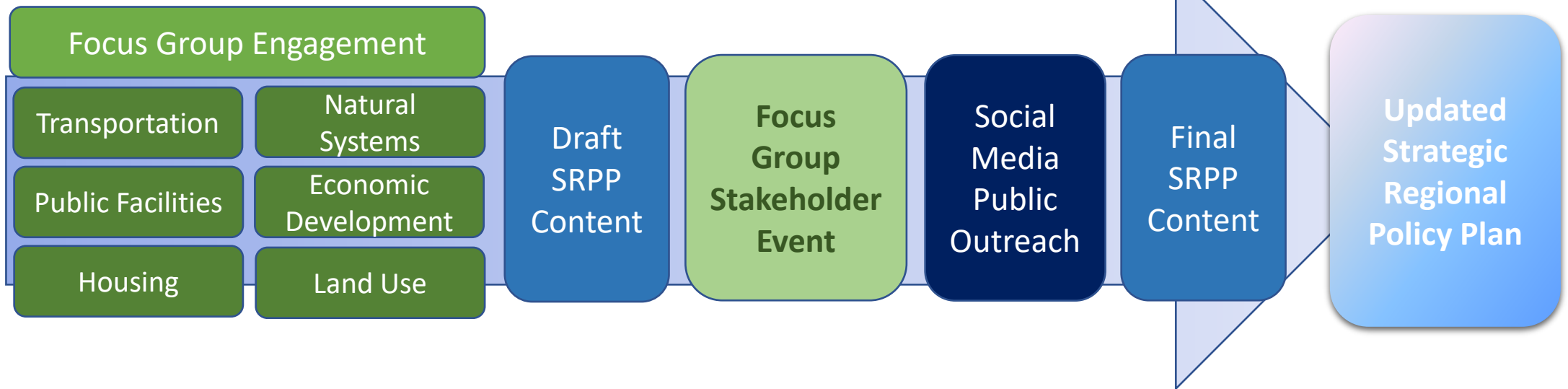


Summer 2022

Fall 2022

Winter 2023

Spring 2023



# *Focus Group Events*

**Transportation: Aug 5**

**Land Use: Aug 11**

**Economic Development: Aug 19**

**Natural Systems: Aug 26**

**Public Facilities: Sept 1**

**Housing: Sept 16**



**Number of professionals who  
attended:**

**67**

**Number of comments received:**

**660**

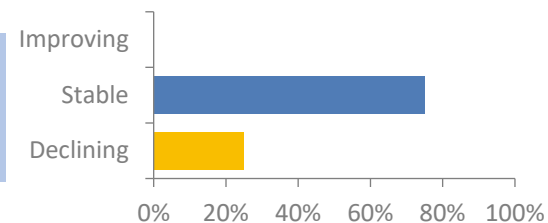
# Addressing Issues



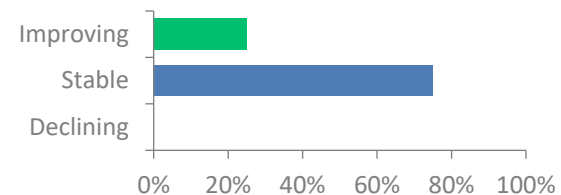
HOW  
do WE **GROW**  
From Here?

## TRANSPORTATION

### COORDINATION OF LAND USES

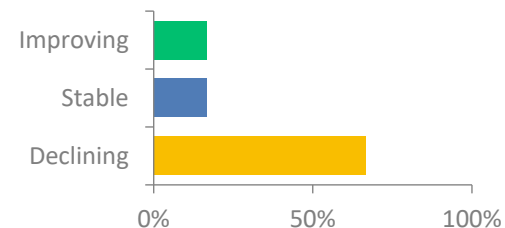


### FEW AVAILABLE MODES

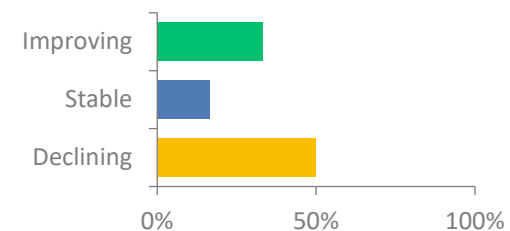


## PUBLIC FACILITIES

### AGING INFRASTRUCTURE



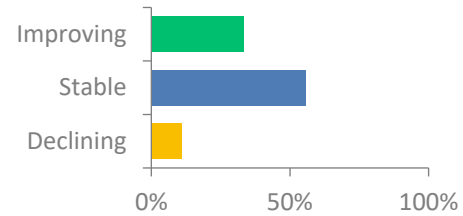
### FLOODING AND INCREASING STORMWATER RUNOFF



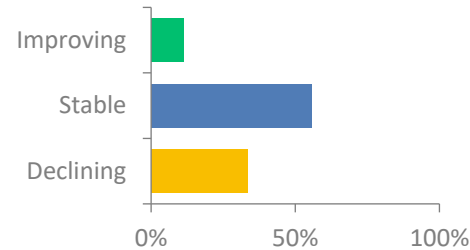


# NATURAL SYSTEMS

## VALUE & PRESERVATION

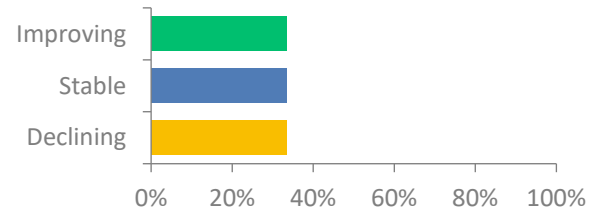


## WATERSHED PLANNING

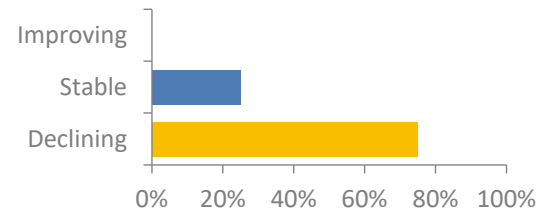


# HOUSING

## STABILIZATION & REVITALIZATION

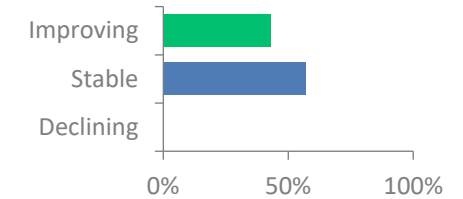


## AFFORDABLE HOUSING

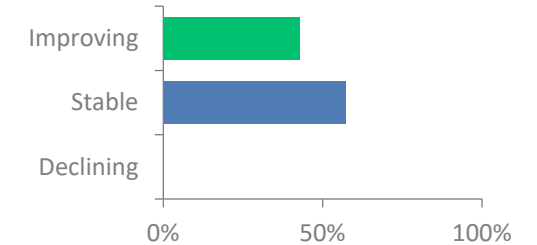


# ECONOMIC DEVELOPMENT

## COMPETING for ECONOMIC DEVELOPMENT

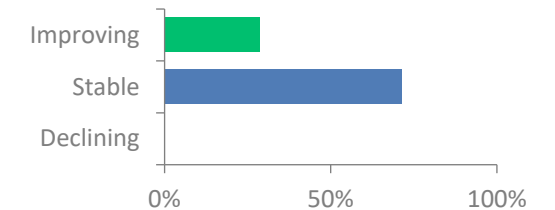


## REVITALIZING BUSINESS DISTRICTS



# LAND USE

## COMPREHENSIVE PLANNING



# *Focus Group Emphasis*

- Focus on equity
- Technology advancement
- Celebrate community uniqueness
- Stormwater management improvement
- Acknowledge trade schools



# *Ideal 2050 - Common Themes*

A **fully connected regional trail system**

Transportation, Economic Dev, Natural Syst, Public Facilities, Land Use, Housing **6**

**More strategic actions on diversity, equity, and inclusion** among industries / jobs, housing, and communities.

Economic Dev, Natural Syst, Public Facilities, Land Use, Housing **5**

Our region is using more **renewable energy**

Transportation, Economic Dev, Natural Syst, Public Facilities, Land Use **5**

More **walkable communities** and neighborhoods

Transportation, Natural Syst, Land Use, Housing **4**

Invest in the future of **transit**

Transportation, Economic Dev, Natural Syst, Housing **4**

There is more **natural habitat / greenspace preserved**

Natural Syst, Public Facilities, Land Use, Housing **4**

Maximized **tree canopy** coverage in all areas

Natural Syst, Public Facilities, Land Use **3**

Build expand and develop more **affordable and middle-class housing**

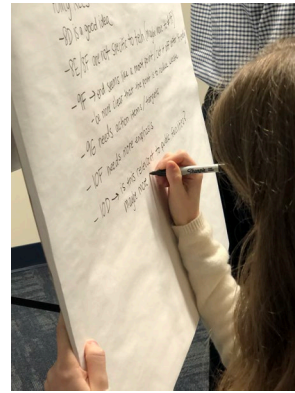
Economic Dev, Land Use, Housing **3**

Clean and **vibrant streams** and lakes

Natural Syst, Public Facilities, Land Use **3**



## 37 organizations represented





# Opportunity Areas



Land Use

- PROMOTE FISCALLY SUSTAINABLE DEVELOPMENT PATTERNS
- PROMOTE GREEN AND HOLISTIC DEVELOPMENT
- PROMOTE EQUITY



Public Facilities

- COORDINATE TECHNOLOGY TO ATTAIN REGIONAL EFFICIENCY
- PLAN, IMPLEMENT, AND INVEST IN RESILIENT INFRASTRUCTURE



Housing

- IMPROVE HOUSING AFFORDABILITY
- INCREASE HOUSING THAT SUPPORTS EQUITY AND UPWARD MOBILITY

# Opportunity Areas



Economic  
Development

- GROW, DEVELOP & RETAIN KEY WORKFORCE TALENT
- PURSUE A 21ST CENTURY ECONOMIC DEVELOPMENT STRATEGY
- INVEST IN INFRASTRUCTURE SUPPORTIVE OF FUTURE ECONOMIC GROWTH NEEDS
- STREAMLINE BUSINESS FRIENDLY ATMOSPHERE



Natural Systems

- SUSTAIN CLEAN SURFACE WATER RESOURCES
- EMPLOY NATURAL SYSTEM CENTRIC LAND USE DEVELOPMENT PRACTICES
- EXPAND ACCESSIBLE ECO-RECREATION AND TOURISM OPPORTUNITIES

## TRANSPORTATION



The Goal: Provide an effective, safe, multimodal, integrated, and financially sustainable transportation system for the region that equitably meets needs, enhances connections to opportunities, controls user costs, and maximizes transportation options.

	Policy Recommendations
<b>Opportunity Area #1: IMPROVE ALTERNATIVES TO DRIVING</b>	A fully-connected regional system of paved trails and protected bike lanes to provide the safe means of travelling by bicycle throughout the region.
	Provide dedicated transit lanes where appropriate to continue to improve the reliability and frequency of bus service throughout the region.
	Use technology to improve the coordination of paratransit in the region.
	Provide better transit connectivity to CVG and the region's job hubs.
	Provide improved transit centers and bus stops to increase the accessibility and comfort of the system.
	Work towards an integrated regional transit system that leverages technology and mobility on demand to provide cost-effective and user-friendly door-to-door transportation.
	Reduce barriers to using multiple modes to complete a trip.
	Improve intercity passenger rail connections
	Corridors through areas with a mixture of uses should accommodate multiple modes of travel - walking/rolling, biking, cars, and busses.
<b>Opportunity Area #2: IMPROVE TRANSPORTATION SAFETY FOR ALL USERS</b>	Apply Vision Zero and complete streets strategies to leverage better roadway design and use technology, vehicle safety systems, and enforcement to reduce crashes, including pedestrian and bicycle involved crashes.
	Protected bike lanes should be considered and where appropriate include a protective element - barriers, bollards, etc., as determined by traffic volume and speed.
	Implement traffic calming in neighborhoods and pedestrian-dense areas.
	Continue to monitor adoption of fully autonomous vehicles and modify local plans accordingly to ensure pedestrian safety is considered.

# OUTREACH METHODS



## ○ Online Public Survey

- ~10 minutes
- Informing priorities and areas of emphasis
- Zip Code required to monitor outreach

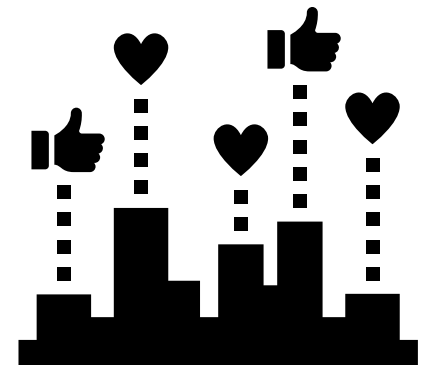
## ○ Social Media Polls





# *REQUESTING YOUR HELP*

- Links on your websites
- Sharing on Facebook ,Twitter, LinkedIn
- Email blasts
- Newsletters and Local Press Coverage



# ***REQUESTING YOUR HELP***

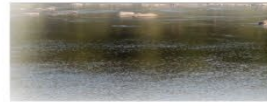
- Campaign Period:  
**Through March 31<sup>st</sup>**

## Contacts:

Jenny Newcomb, Digital Media Specialist  
[jnewcomb@oki.org](mailto:jnewcomb@oki.org) (513) 619-7692

Travis Miller     [tmiller@oki.org](mailto:tmiller@oki.org)     (513) 619-7681

Jake Hesseling     [jhesseling@oki.org](mailto:jhesseling@oki.org)     (513) 619-7684



# Next Regional Planning Forum

## April 28, 2023

[www.rpf.oki.org/](http://www.rpf.oki.org/)

