



# Welcome

**WIFI: OKI-Guest**  
**Pass: #R1verB0at**





# Announcements





# World Town Planning Day

November 17, 2023

Village of North Bend







# OKI Long-Range Transportation Plan

Projects due to Bob Koehler  
[rkoehler@oki.org](mailto:rkoehler@oki.org)

October 31, 2023





# AICP CM Credits

## 1.5 Credits

Go to your online CM Log  
“APA Ohio Cincinnati Section”  
“OKI Regional Planning Forum”







# OKI Freight Plan

OKI Regional Planning Forum

October 26, 2023



[www.oki.org](http://www.oki.org)

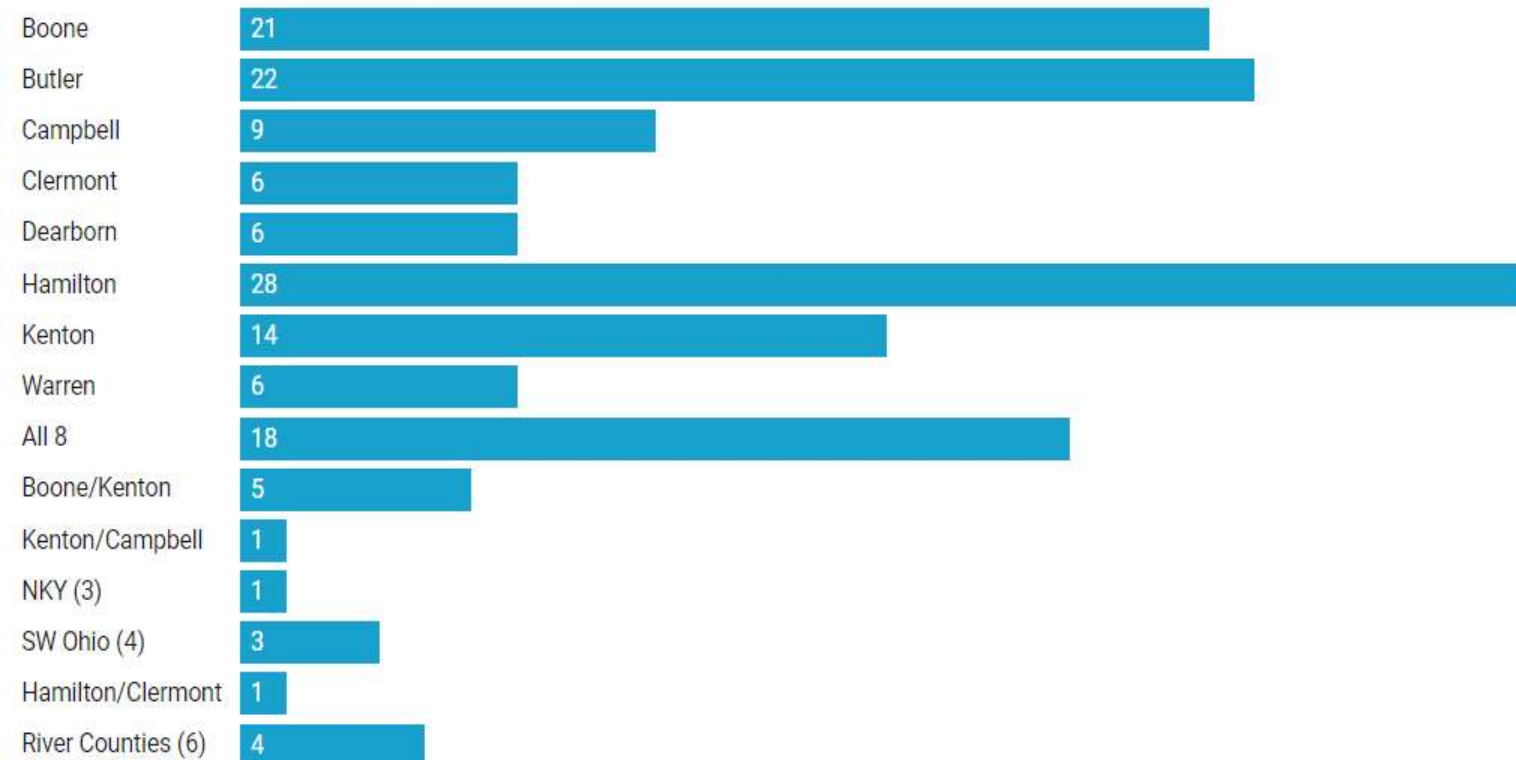
[f /okiregional](https://www.facebook.com/okiregional)

[t /okircog](https://www.tumblr.com/okircog)

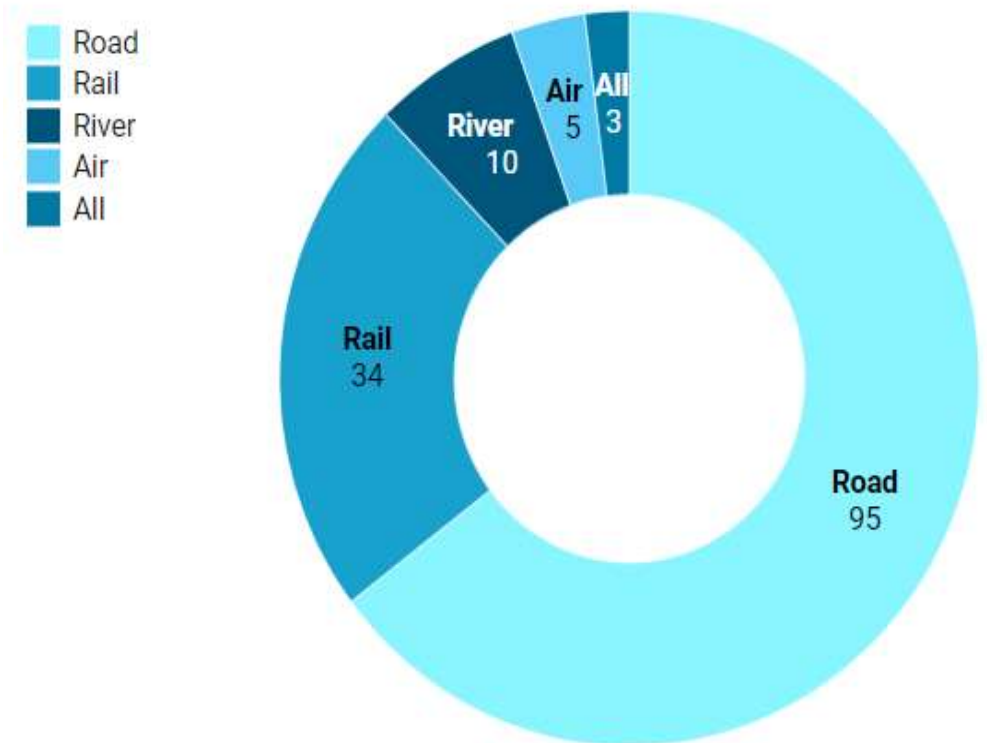
## OKI Freight Plan Number of Recommendations by Type



## Recommendations by County



## Recommendations by Freight Mode







# OKI Freight Plan

## Group Discussion Time

### Local Planning, Economic Development, Elected Officials, Public Health, & Other Professionals:

- Thoughts on how can you interact with the OKI Freight Plan/use it?
- Ideas on how it could impact your community? Or help you do your job?
- **Examples** of actions you could take?



An isometric illustration of a freight hub. On the left, a large white airplane is parked on a tarmac. Next to it is a fuel tank and a fuel truck. In the center, a road with a 'DELIVERY' truck and a smaller delivery van. To the right, a train with a large white tank car and a freight car is on tracks. In the bottom right, a ship is docked at a pier. The background shows city buildings and trees.

# OKI Freight Plan

## Local Planning, Economic Development, Elected Officials, Public Health Professionals

- How can you interact with the OKI Freight Plan/use it?
- Ideas on how it could impact your community? Or help you do your job?
- **Robyn's Examples** of actions you could take?
  - 1) Implement recommendations that increase safety, improve environment, enhance economic competitiveness, or accomplish other goals for your community.**
  - 2) Apply data to support your local efforts**
  - 3) Use interactive visualization tools to educate citizens, staff and officials on current and future state of freight in the region and your county**

# Examples of ways you could use the OKI Freight Plan:

- 1) Implement recommendations that increase safety, improve environment, enhance economic competitiveness, or accomplish other goals for your community.

## PROJECT



***Madison Road Bridge Clearance Improvement***

## PROGRAM



***JobsOhio - Advanced Air Mobility (AAM) Southwest Ohio Freight Flight Use Cases***



## PLANNING



***Clermont County Future Ohio River Industrial Development Study***

## POLICY



***Create Truck Parking Model Ordinance Toolkit***





# Examples of ways you could use the OKI Freight Plan:

## 2) Apply data to support your local efforts

Total Truck Trip Emissions as a Percent of All Emissions, 2019

	CO2	CO	NOx	Total PM2.5	SO2	VOC
OKI Region	30.9	8.2	65.7	75.0	15.7	11.1
Boone	38.1%	8.8%	73.5%	82.7%	19.7%	15.7%
Butler	30.8%	9.3%	60.5%	69.4%	16.4%	9.5%
Campbell	26.6%	7.7%	68.8%	81.6%	13.5%	15.0%
Clermont	28.7%	8.6%	56.1%	65.8%	15.0%	8.4%
Dearborn	36.9%	9.1%	65.6%	73.7%	19.1%	10.9%
Hamilton	28.1%	7.3%	63.5%	70.2%	14.0%	9.9%
Kenton	31.7%	8.9%	72.7%	85.4%	16.2%	18.1%
Warren	36.3%	9.0%	69.4%	75.8%	18.5%	11.0%

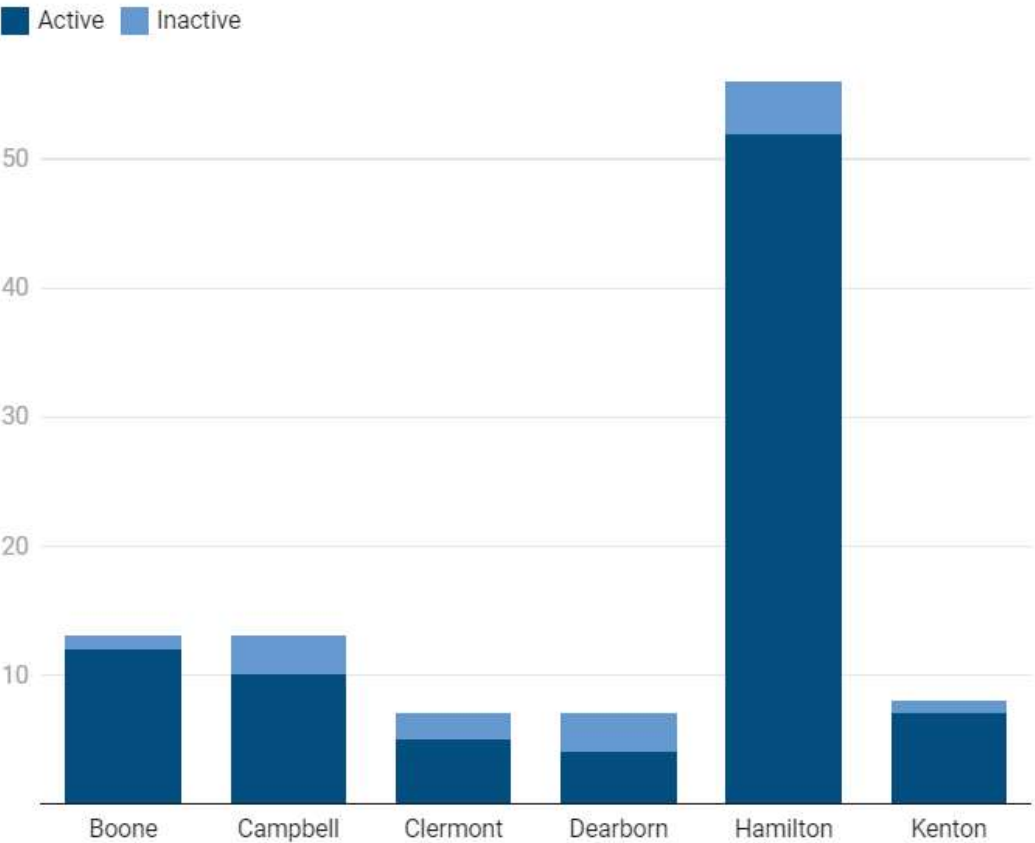
Source: The Ohio-Kentucky-Indiana Regional Council of Governments (OKI). (2019) 2021 Emissions Analysis. [Data set]. • [Get the data](#) •

Top 10 Public At-Grade Crossings by Overall Non-Motorized Roadway Users ACS Score

	Crossing ID	County	City	Roadway	Railroad	Proximity to Schools, Parks, Recreational Centers (miles)
1	481714R	Hamilton	Newtown	Round Bottom Rd	Norfolk Southern	0.006
2	152439R	Warren	Carlisle	Beachler Rd	CSX	0.008
3	481712C	Hamilton	Newtown	Debolt St	Norfolk Southern	0.006
4	152368W	Hamilton	Lockland	W Wyoming Ave	CSX	0.008
5	481713J	Hamilton	Newtown	Church St	Norfolk Southern	0.031
6	152420Y	Butler	Madison	Pierson Rd	CSX	0.007
7	151321X	Warren	Harlan	Pleasant-Renner Rd	Indiana & Ohio Railway	0.000
8	524882U	Hamilton	Evendale	E Sharon Rd	Norfolk Southern	0.023
9	152355V	Hamilton	Elmwood Place	Center Hill Ave	CSX	0.041
10	524736N	Hamilton	Elmwood Place	Maple Ave	Norfolk Southern	0.007

Source: Ohio Rail Development Commission (ORDC) and CPCS. Ohio Rail Crossing Pilot Study: Adaptive Capacity Score Tool and Data Sources Manual. (2020), The Ohio-Kentucky-Indiana Regional Council of Governments (OKI). ACS Tool. (2021). • [Get the data](#) • Created with [Datawrapper](#)

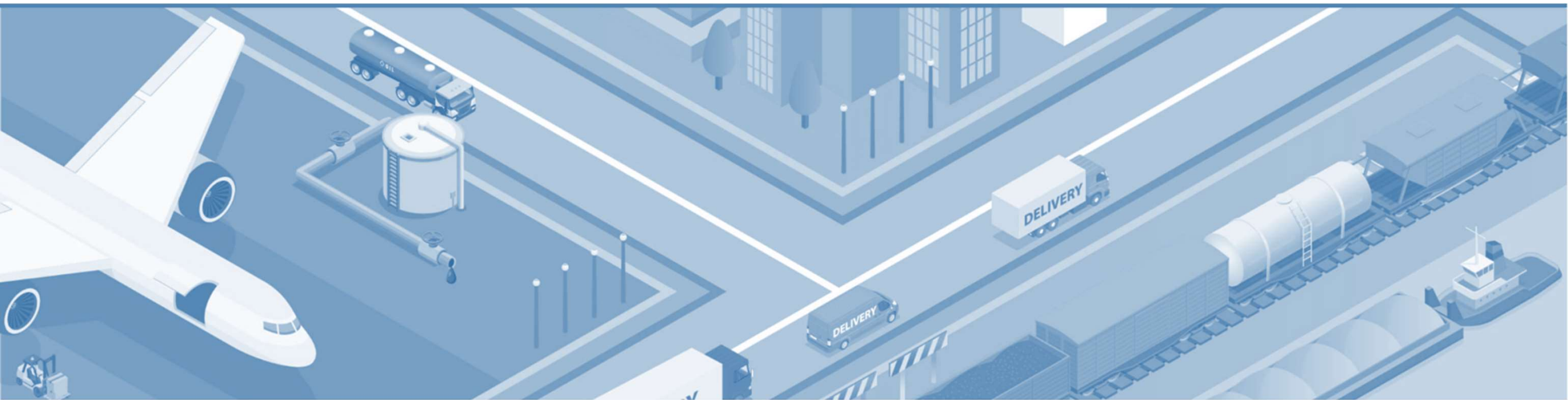
River Freight Docks in the OKI Region by Status



Source: Central Ohio River Business Association (CORBA). Central Ohio River Information System (CORIS). January 2022. • [Get the data](#) • Created with [Datawrapper](#)





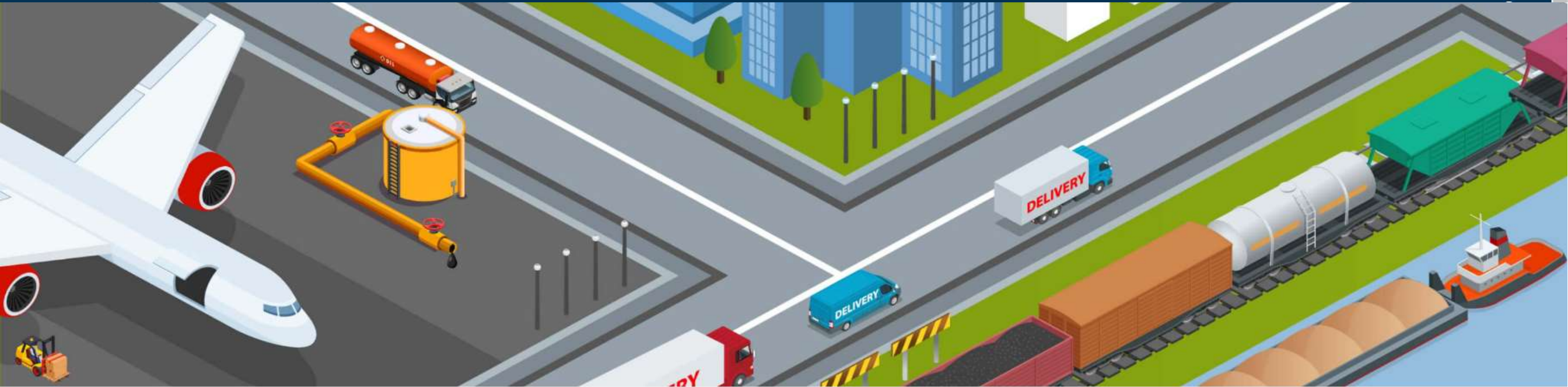


## **Got Freight Questions? Want to Discuss Further? Let's Talk.**

Freight contacts, data, recent news/research, grant opportunities, other resources...How can I help you?

**Robyn Bancroft, AICP**  
Strategic Initiatives Manager  
513.619.7662  
[rbancroft@oki.org](mailto:rbancroft@oki.org)





# A Freight Transportation Plan for the OKI Region

OKI is the region's public leader in freight transportation planning. OKI's wealth of experience working with data has resulted in the use of more than 75 unique datasets to incorporate the existing performance of each freight mode into the plan. With an eye on the future, the plan is considering the impact and application of new, emerging technologies to enhance opportunities for socio-economic growth.

## OKI Freight Plan Timeline

Fiscal Year 2022

(July 2021 – June 2022): OKI Staff

- Existing Freight System Performance Modal Summaries
- Visualize Freight Conditions



## About the Plan

The OKI Freight Plan is a systematic examination of current and future conditions related to the movement of goods in, out and within the region. With the mission to ensure the safe and efficient flow of goods for a healthy and robust regional economy, the OKI Freight Plan will outline the capital investments, policy approaches and special studies essential to delivering this outcome to the OKI region for the next 30 years.

OKI is federally mandated and funnels about \$40 million in transportation funds to construction and planning projects throughout its eight-county, three-state region that includes: Ohio's Butler, Clermont, Hamilton and Warren counties; Kentucky's Boone, Campbell and Kenton counties and Dearborn County Indiana.

## Relationship to State Freight Transportation

Now that dedicated freight planning has been in place for over a decade, each of our three member states has developed several helpful freight resources, in addition to their federally mandated state freight plans.

- **Ohio:** [Transport Ohio, Ohio Department of Transportation](#)
- **Kentucky:** [Freight Planning, Kentucky Transportation Cabinet](#)
- **Indiana:** [Freight, Indiana Transportation Department of Transportation](#)

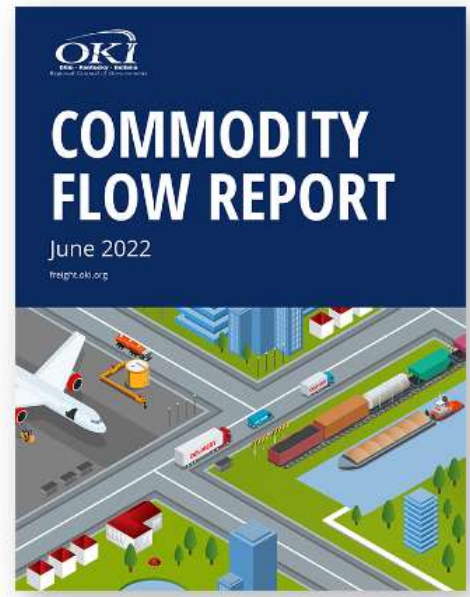
## Relationship to National Freight Transportation

Although MPOs are not mandated to have regional freight plans, OKI shares the United States Department of Transportation Vision for Freight (USDOT).

United States Department of Transportation Vision for Freight:  
The federal freight transportation system will strengthen our economic competitiveness with safe and reliable supply chains that efficiently and seamlessly connect producers, shippers, and consumers in domestic and foreign markets.

As such, we will continue to provide the strong local support that is critical for achieving mutual statewide and national goals.

## Commodity Flow Report



[Access the Commodity Flow Report](#)

## View the latest freight data by mode

OKI freight dashboards, interactive maps and apps provide the most current data available for each freight mode. At a minimum, OKI staff update these resources every year.

### Freight Infrastructure Dashboards

[Road](#) »

[Rail](#) »

[River](#) »

[Runway](#) »

### Freight Interactive Maps

[Freight Job Hubs](#) »

[River Freight Map](#) »

[Rail Freight Map](#) »

[Truck Freight Map](#) »

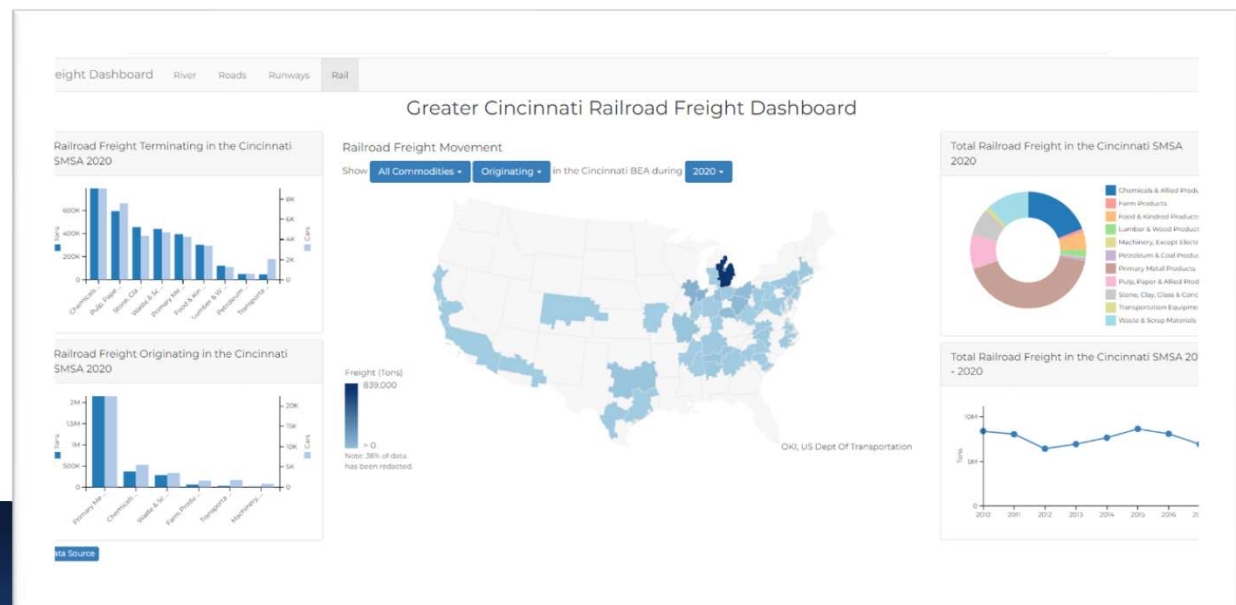
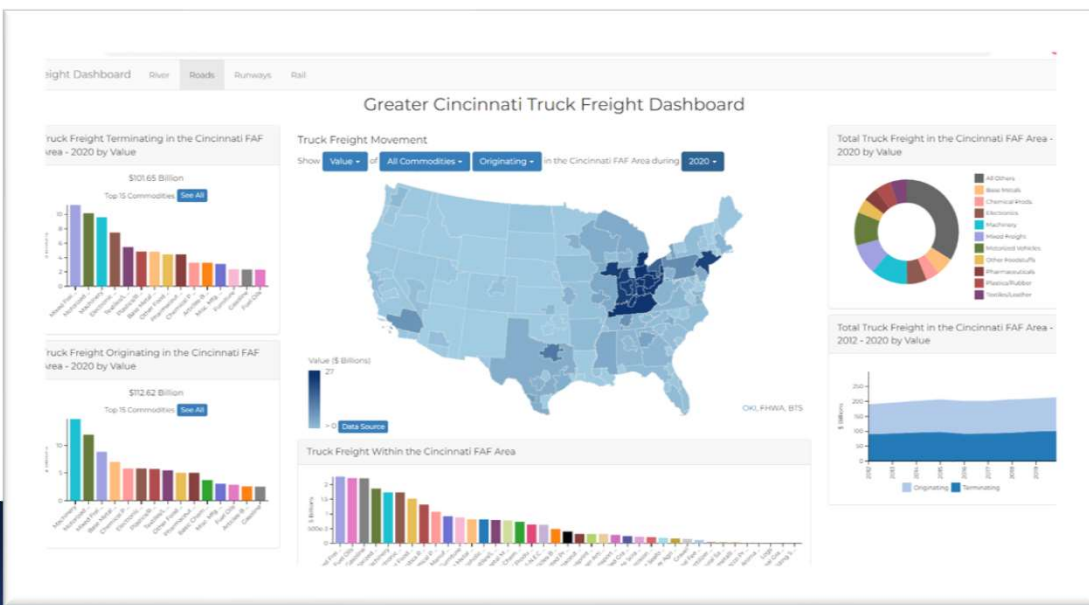
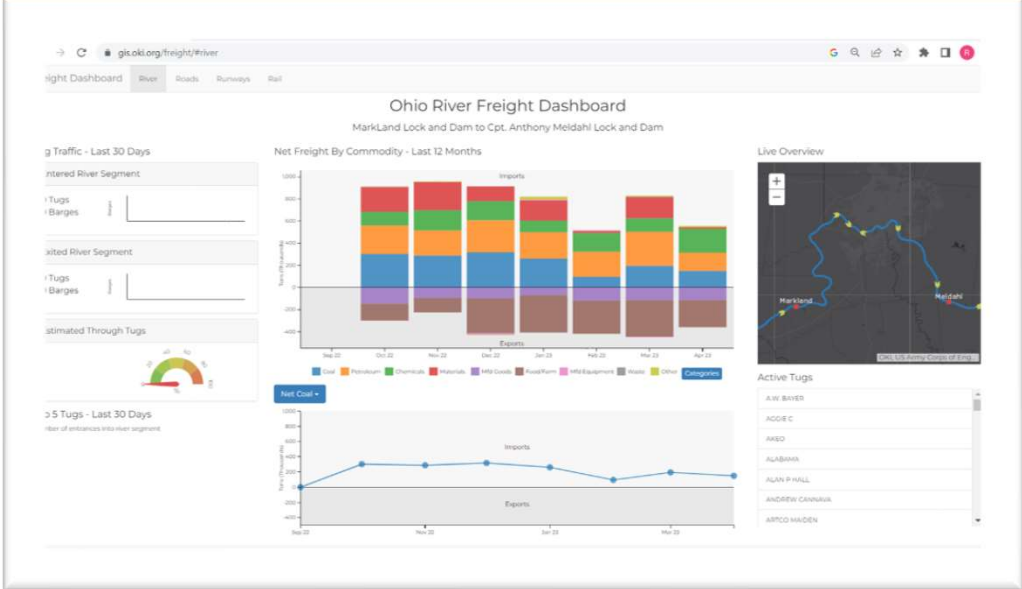
Facebook

Twitter

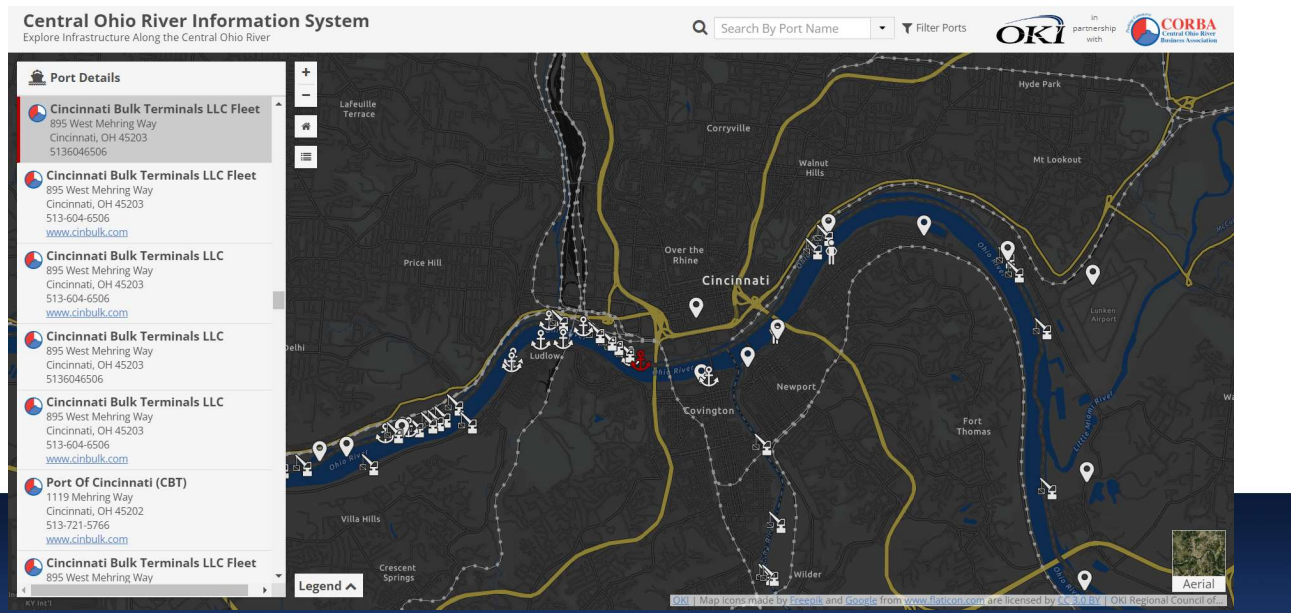
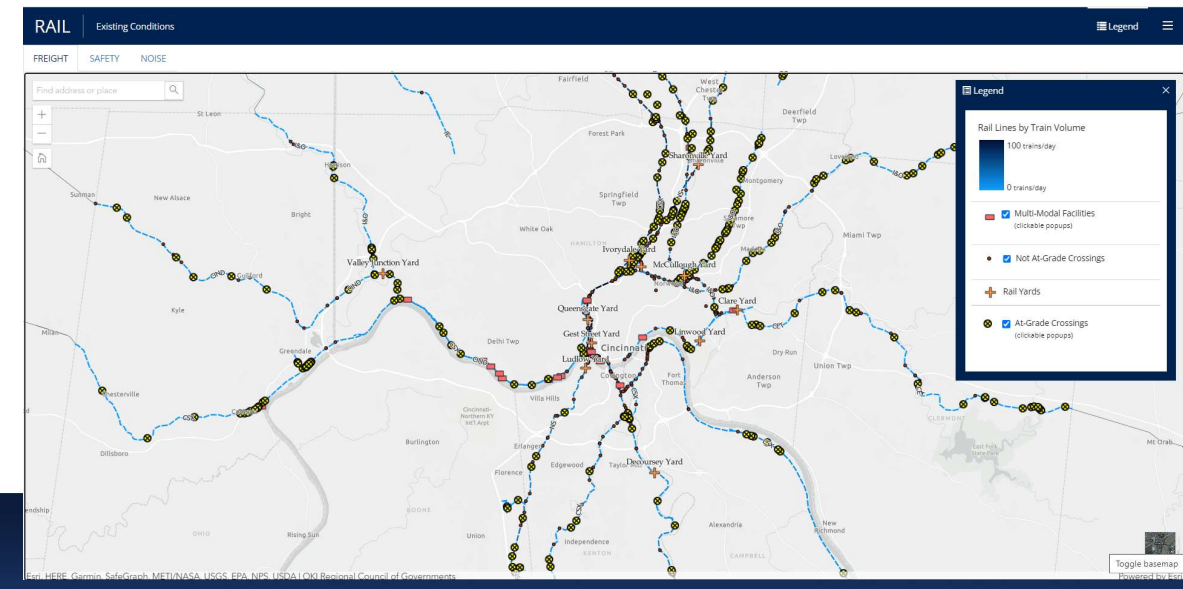
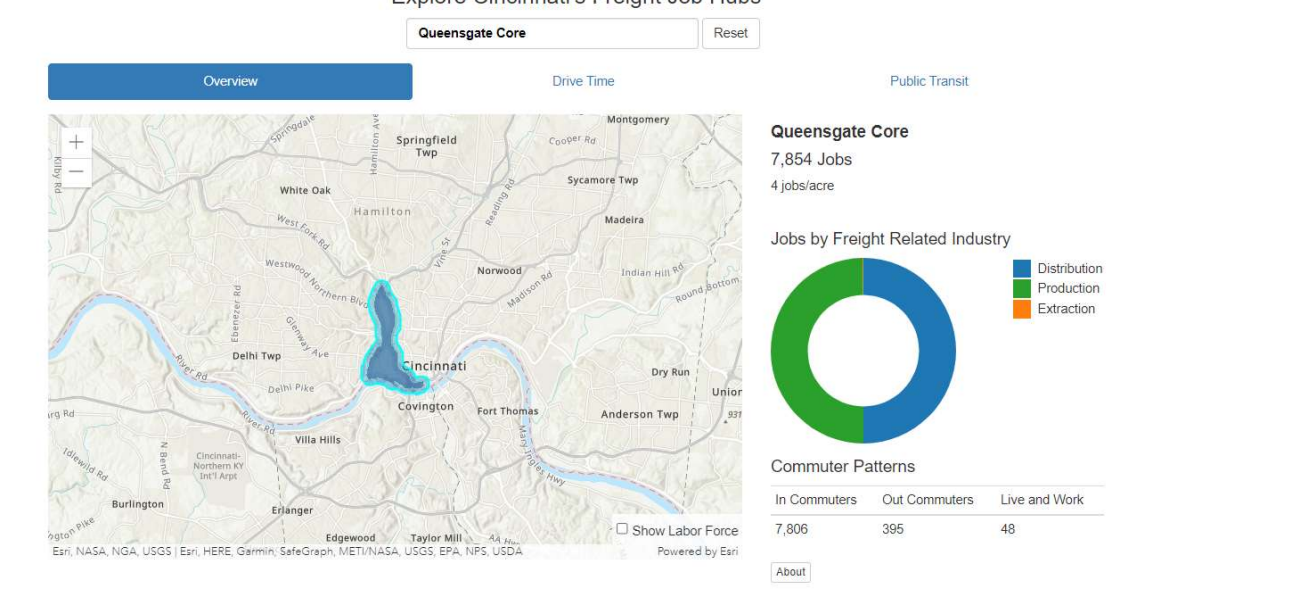
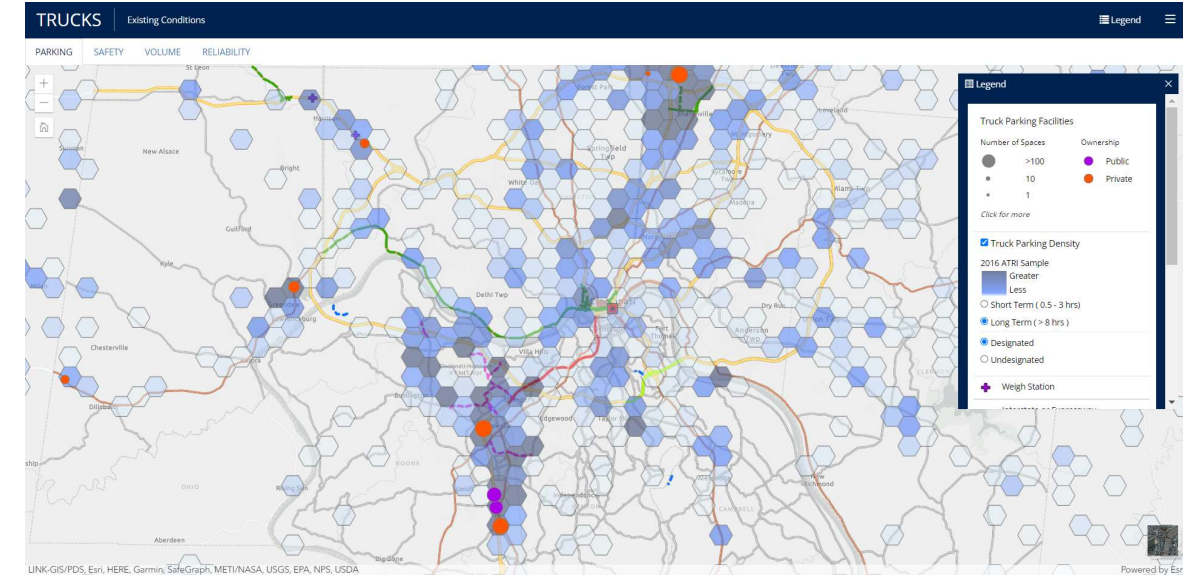
Gmail

Print Friendly











# Freight Plan Goals



## Safety

The freight transportation system should provide for reducing the risk of crashes that cause death or injuries for the traveling public; minimizing risks to shipments and property damage; and ensuring the safety, health, and well-being of freight employees.



## Infrastructure Condition

The preservation, maintenance and optimization of the region's existing freight transportation systems and infrastructure is a core value. The state of good repair is improved through the use of advanced technology, performance management and innovation.



## Mobility and Reliability

This goal pertains to system performance and how well commodities can move with greater speed and less congestion to improve efficiency. Recommendations that remove freight bottlenecks or add capacity to handle growing freight demand ensure reliable travel times and deliveries.



## Environmental Sustainability

Today greater importance is placed on strategies that promote effective and efficient use of natural resources that reduce adverse environmental and community impacts. Decreasing mobile source emissions, noise pollution, and non-renewable fuel usage exemplify approaches that have a beneficial effect on the region's life and tl



## Economic Competitiveness

The transportation network is critical to the economic vitality of the region by enabling national and global competitiveness, productivity, and efficiency. Harnessing the region's transportation assets and offering strong performing multi-modal freight options support business retention, expansion



# A Freight Transportation Plan for the OKI Region

OKI is the region's public leader in freight transportation planning. OKI's wealth of experience working with data has resulted in the use of more than 75 unique datasets to incorporate the existing performance of each freight mode into the plan. With an eye on the future, the plan is considering the impact and application of new, emerging technologies to enhance opportunities for socio-economic growth.

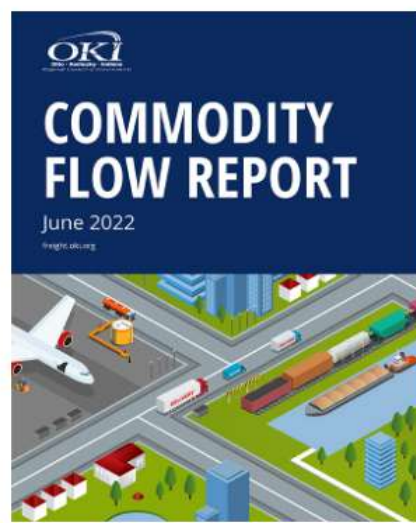
## OKI Freight Plan Timeline

Fiscal Year 2022  
(July 2021 – June 2022): OKI Staff

- Existing Freight System Performance Modal Summaries
- Visualize Freight Conditions



# Commodity Flow Report



[View the Report](#)

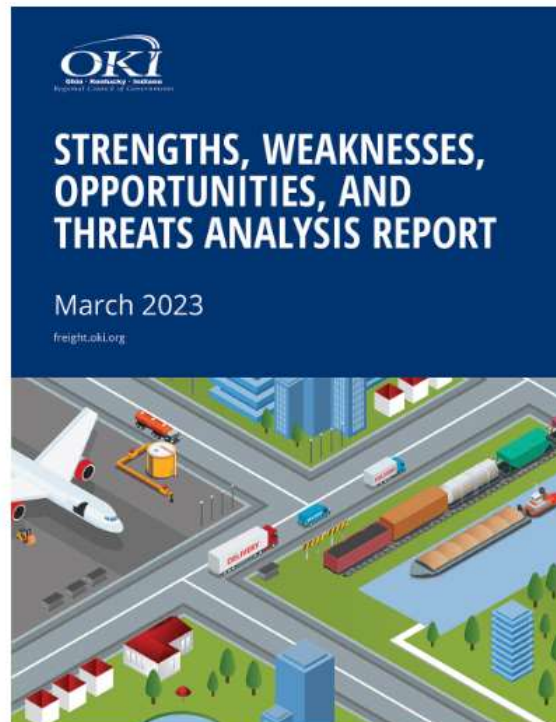
## Commodity Flow Report June 2022

### Data Source

This document outlines existing (2017) and future (2050) freight commodity flow conditions for the OKI region. The source for all Commodity Flow Report figures and tables is the publicly available Freight Analysis Framework FAF5.2 Regional Database for 2017 and forecasts up to 2050 (mid-range estimates only).

### Freight Analysis Framework (FAF)

The FAF is produced through a partnership between the Bureau of Transportation Statistics (BTS) and Federal Highway Administration (FHWA). It integrates data from various sources to create a comprehensive picture of freight movement among states and major metropolitan areas by all modes of transportation. The 2017 Commodity Flow Survey (CFS) and international trade data from the Census Bureau serve as the backbone of the FAF. They are integrated with ancillary data sources that capture goods movement in agriculture, resource extraction, utility, construction, retail, services, and other sectors. These sources: Census Foreign Trade Statistics; Economic Census data; Department of Agriculture's Census of Agriculture; Vehicle Inventory and Use Survey (VIUS); National Highway Planning



## Strengths, Weaknesses, Opportunities, and Threats Analysis Report, March 2023

For the region to meet its freight mobility potential, there must be



## Issues and Needs Assessment Report, April 2023

OKI's freight issues and needs are summarized based on the current and expected future conditions of the region's freight



# Freight Plan Recommendations

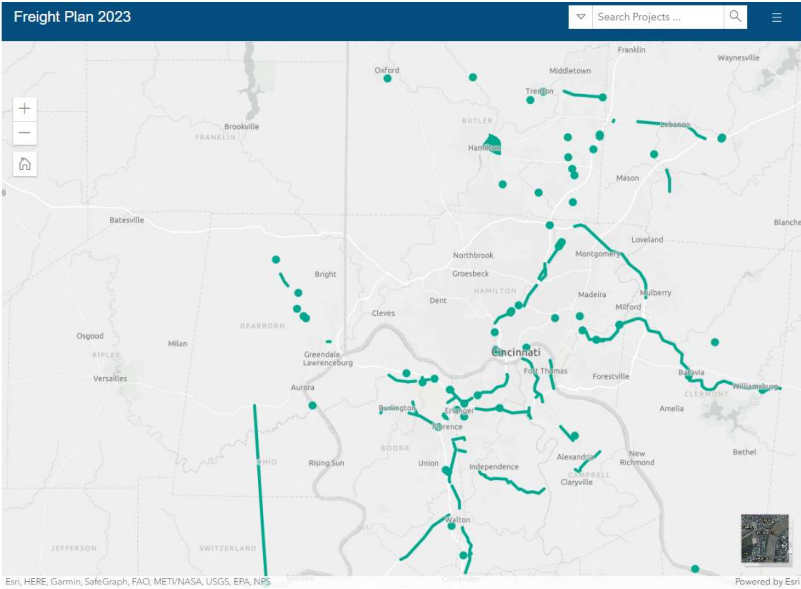
The freight plan includes a total of 147 recommendations.

[Download Complete Freight Plan Recommendations List \(.xlsx file\)](#)

To address current and future freight issues that have, or may have, an adverse impact on the region, four types of recommendations have been included in this OKI Freight Plan:

- [Project Recommendations](#)
- [Program Recommendations](#)

- [Planning Study Recommendations](#)
- [Policy Recommendations](#)



County	Recommendation Title	Facility	Location	Description	Project Type	Cost (2023\$)	Timing	Primary Freight Mode	Secondary Freight Mode
Clermont	Captain Meldahl Locks and Dam Maintenance	Captain Meldahl Locks and Dam (Ohio River)	Village of Felicity	Needed improvements to provide consistent service and capacity for barge traffic	Freight River	\$100.00 M	Long	River	n/a
Clermont	CET East Fork Railroad Bridge Rehabilitation	CCET	CCET at East Fork of Little Miami River in Batavia	Cincinnati Eastern Railroad (CET) bridge rehabilitation	Freight Rail	\$4.00 M	Short	Rail	n/a
Clermont	CET East Fork Railroad Bridge Rehabilitation	CCET	CCET at East Fork of Little Miami River in Williamsburg	Cincinnati Eastern Railroad (CET) bridge rehabilitation	Freight Rail	\$1.50 M	Short	Rail	n/a
Clermont	CET Locomotive Purchases	CCET	Clermont County	Cincinnati Eastern Railroad (CET) locomotive (two) equipment purchases for service expansion	Freight Rail	\$6.00 M	Short	Rail	n/a
Hamilton	CET Round Bottom Rd Rail Siding	CCET	CET at Round Bottom Rd in Newtown	Construct new siding at Round Bottom Rd where Cincinnati Eastern Railroad (CET) unload aggregate at their pit in Newtown. Siding to be 35 cars in length.	Freight Rail	\$0.75 M	Short	Rail	n/a

[Get the data](#) • Created with [Datawrapper](#)



Regional Planning Forum

# Climate Pollution Reduction Grant For the Cincinnati MSA

October 26, 2023



[www.oki.org](http://www.oki.org)

[f /okiregional](https://www.facebook.com/okiregional)

[t /okircog](https://www.tumblr.com/okircog)





- **\$5 Billion in total funding**
- **Locally-driven GHG reduction measures**
- **States, MSAs, Tribes and Territories**





**Phase 1: Non-competitive  
Planning Grants**

**Phase 2: Competitive  
Implementation Grants**





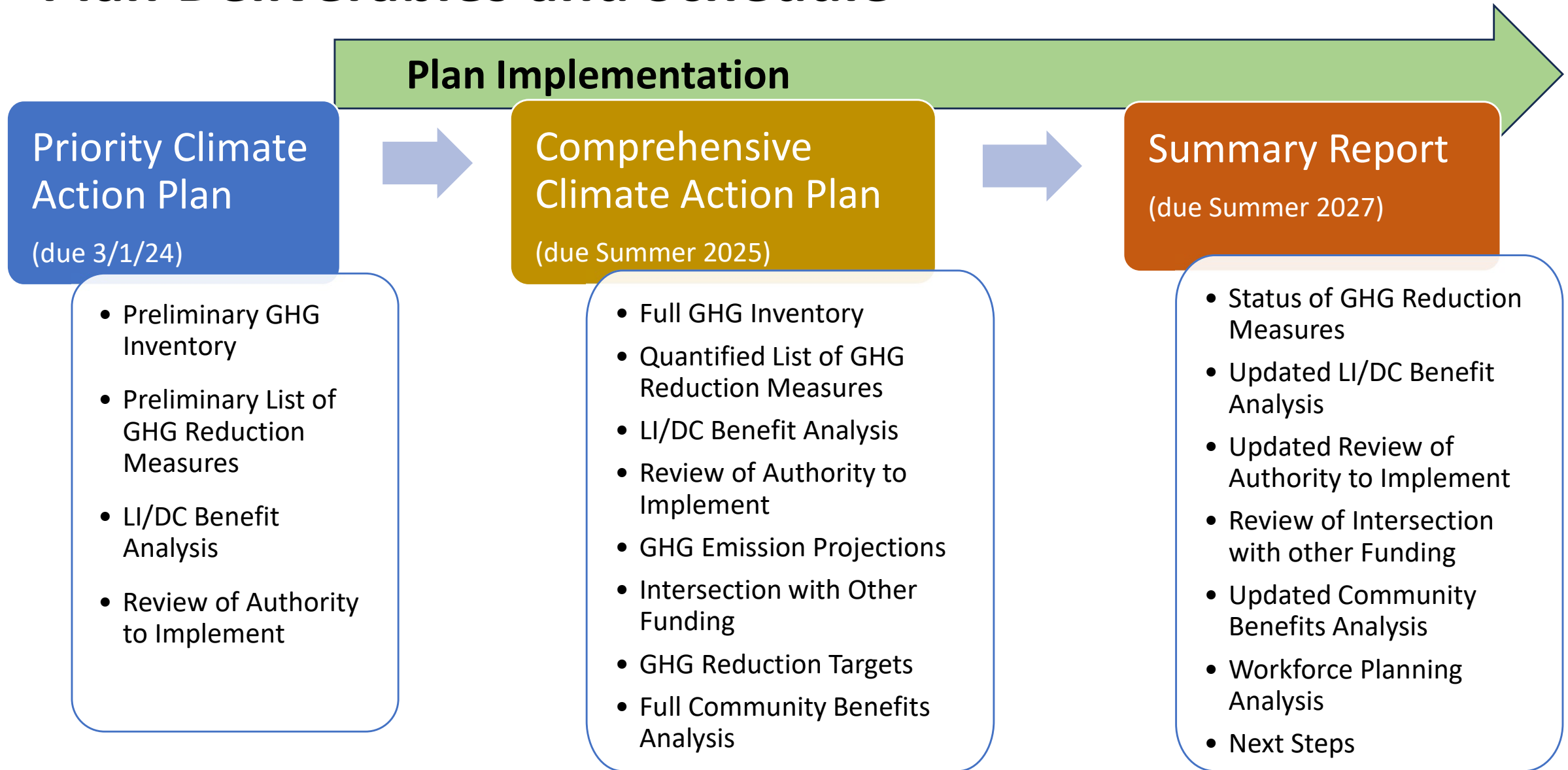
# August 1<sup>st</sup>: Cincinnati MSA awarded \$1M to produce a regional Climate Action Plan



Northern Kentucky Area Development District



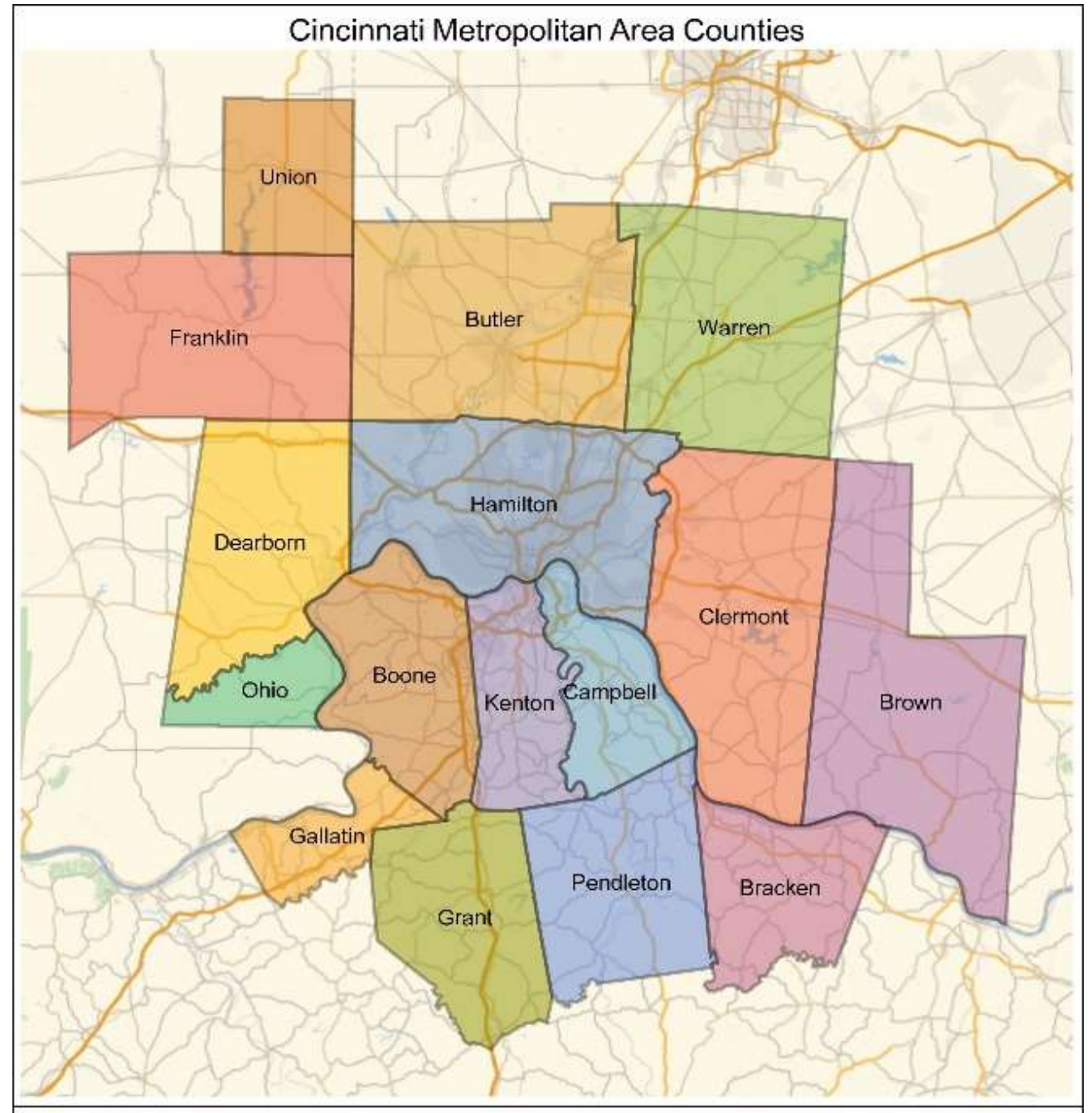
# Plan Deliverables and Schedule





# Plan for entire MSA

- 16 counties
- 200+ political jurisdictions
- Reliance on partnerships



# Community and Stakeholder Outreach

Multi-level engagement

- Geographic based
- Issues based

Steering Committee







# ThriveTogether

A Sustainability Playbook  
for Greater Cincinnati



[Learn more](#)



## Start Here!

Click here if you're new to the ThriveTogether engagement site! We have all of the how-to's and information on how to engage.

[Take the survey](#)



## Equity and Representation Survey

This Equity Survey is designed to help us understand who we are serving. By taking this survey, you're helping this work be more equitable, intentional, and representative. Your answers are all confidential.



9

## What is your proposal?

Post your proposal on this platform, gather support and place it on the agenda. Or review the suggestions of others.

[Explore all proposals](#)

[Post your proposal](#)

improve the health and equity of 15

# Phase 2 Implementation Grants

Notice of Intent – February 1, 2024

Applications due – April 1, 2024

Awards between

\$2 Million and \$500 Million





# Phase 2 Implementation Grants

- Fleet electrification
- Programs that encourage mode shift away from privately owned vehicles – also carpool / vanpool
- Energy audits, energy efficient building upgrades, solar for municipal buildings
- Streamlined permitting for solar
- Programs to reduce the release of HFCs
- Projects to capture methane release from landfills and wastewater treatment facilities
- Programs to reduce fertilizer and water use in farming



# Questions for the Audience

Is your organization taking any action on climate change, energy efficiency, reducing GHG emissions?

What barriers to you see within your organization or community to taking action?





# Questions for me?



**Andy Meyer, AICP**  
Senior Planner  
OKI Regional Council of  
Governments

[ameyer@oki.org](mailto:ameyer@oki.org)



# Next Regional Planning Forum

## January 12, 2024

[www.rpf.oki.org/](http://www.rpf.oki.org/)

