

OKI FY 2026

***UNIFIED PLANNING
WORK PROGRAM***

Executive Summary



720 East Pete Rose Way, Suite 420
Cincinnati, Ohio 45202

www.oki.org

Phone: (513) 621-6300

TTY: 800-750-0750 (Ohio Relay Service)

April 10, 2025

INTRODUCTION

The Fiscal Year 2026 Unified Planning Work Program (UPWP) outlines the scope of work to be undertaken by Ohio-Kentucky-Indiana Regional Council of Governments for the period beginning July 1, 2025 and ending June 30, 2026. OKI serves as the Metropolitan Planning Organization (MPO) for the Greater Cincinnati region. This document illustrates the relationship between adopted goals, objectives, and program activities. It outlines the general nature of these program elements, which are summarized by general categories, and are referenced to specific projects by project number. Planning activities, products and a budget are provided for each program element. Also included in this document is the agency Prospectus (see Appendix D) which provides the agency structure, committee memberships and key interagency agreements.

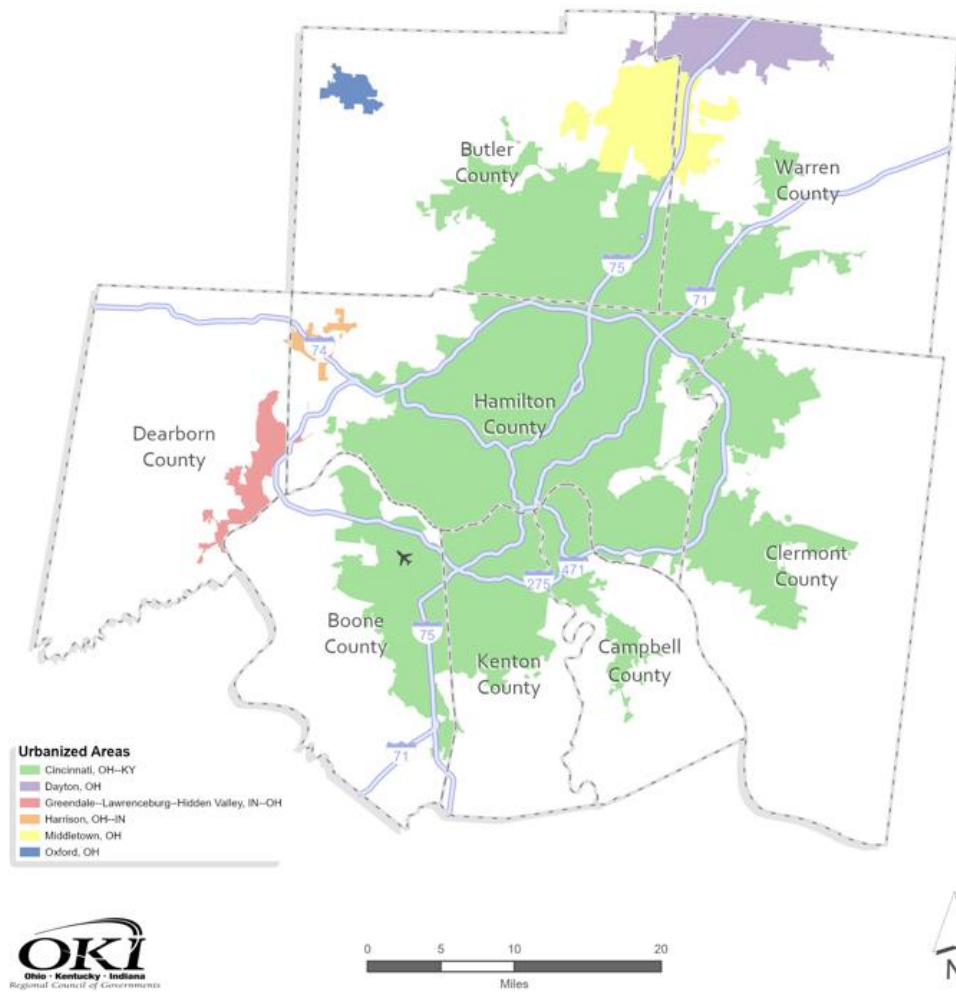
Primarily a management tool for planning and coordination, the UPWP provides the basis for cataloging and integrating OKI's activities into general categories. It delineates the programmatic and fiscal relationships essential for internal planning and programming. The current federal regulations that guide MPOs in developing an annual UPWP for the purpose of programming, scheduling, and managing metropolitan transportation planning activities for the program year are found in 23 U.S.C. 134(a), (f) as well as 49 USC 5303(a), (b). The primary federal regulations are 23 CFR 420.109, 23 CFR 450.308, 49 CFR 613 and 23 U.S.C. 150(c).

PLANNING AREA

The OKI region and Metropolitan Planning Area (MPA) embraces an area of 2,636 square miles, with a regional population of 2,120,721 (2020 Census) in Butler, Clermont, Hamilton and Warren counties in the State of Ohio; Boone, Campbell and Kenton counties in the Commonwealth of Kentucky; and Dearborn County in the State of Indiana.

For several years, part of Dearborn County was identified as part of the Cincinnati-OKI Urban Area. Procedures for urban area definition changed with the 2020 Census and Dearborn is no longer considered part of the Cincinnati Urban Area. Dearborn and OKI have a mutual interest continuing the relationship and because of the urbanization trend in the county Dearborn County is considered part of the OKI Metropolitan Planning Area (MPA). As such, OKI will continue many of the metropolitan planning functions on behalf of Dearborn County with financial support from INDOT using State Planning and Research Funds (SPR). All Dearborn planning activities are funded using SPR funds except in 5310 activities.

OKI METROPOLITAN PLANNING AREA



PLANNING PRIORITIES

The FY 2026 transportation planning program emphasizes the implementation and documentation of the activities which will advance the region's ability to meet the future travel needs of the OKI region.

The overall goal for transportation planning is the implementation of balanced and efficient intermodal and multimodal transportation services for the OKI region while involving a broad spectrum of agencies and the public in all aspects of the process. More specifically it is the intent of the program to address the goals of the *OKI 2050 Metropolitan Transportation Plan* which are consistent with the metropolitan planning factors outlined in the federal transportation legislation Infrastructure Investment and Jobs Act (IIJA). Within the context of these goals, and in consideration of perceived local area needs and OKI's overall role in transportation planning, efforts will be directed toward the following types of activities. OKI staff, in coordination with USDOT, ODOT, KYTC and INDOT, will continue the performance-based planning efforts initiated in FAST Act. Performance Targets will be established and monitored to address performance measures consistent with 23 CFR Part 490 and Part 924 and coordinating on targets related to Transit Asset Management and Transit Safety.

- 1) Maintain a Metropolitan Transportation Plan (MTP) to serve as a guide for transportation investment and service decisions.
 - Maintain, refine, amend and update as necessary the *OKI Metropolitan Transportation Plan*, including the travel demand forecasting model (TDF), in conformance with the requirements of the Clean Air Act (CAA) and IIJA. Continue and expand an active performance-based planning component of the planning process.
 - Consideration of non-motorized modes of travel to increase the number of trips for utilitarian purposes made by bicycling and walking, and to improve the safety and convenience for these modes in the region.
 - Improve the interaction between regional and local planning activities and strengthen the relationship between land use planning and transportation planning at all levels.
- 2) Maintain current socioeconomic and transportation system inventories and projections.
 - Maintain up-to-date estimates and forecasts of demographic and land use activity for input to transportation planning activities.
 - Maintain current transportation system inventory and usage data.
- 3) Evaluate local area transportation problems and develop recommended solutions.
 - Assist units of local government in analyzing the impact of traffic generated by proposed developments and preparing recommendations for street access and traffic control to serve the needs of the proposed development, while preserving the capacity and safety of the public roadways.
 - Assist and encourage units of local government in the development of access management policies and corridor plans, to preserve and protect the functional integrity of the roadway system.
 - Inventory and evaluate traffic operations at problem intersections and formulate recommendations for improvements regarding striping, signage, channelization, signalization and other traffic controls.

- Inventory and evaluate traffic operations on key segments of existing roadways and develop traffic flow improvement recommendations through Transportation System Management and Operations (TSMO) strategies and projects to improve system efficiency, and to help realize reductions in vehicle miles of travel, congestion, air pollution, fuel consumption, and advance a system that enhances livability.
 - Provide technical assistance for the preparation of pedestrian, vehicular and/or bicycle circulation plans.
- 4) Prioritize transportation projects to assure project funding and full utilization of federal and state funds.
- Develop and maintain a biennial Transportation Improvement Program (TIP).
 - Continue the competitive project selection process that reflects the transportation performance measures.
 - Conduct a TIP and MTP conformity analysis consistent with the State Implementation Plan for Air Quality as required.
 - Investigation of innovative financing mechanisms, both public and private, to improve the ability of local governments to implement needed transportation improvements.
- 5) Assist in implementation of specific transportation projects.
- Serve as the designated recipient for FTA's Specialized Transportation Program (Section 5310).
 - Evaluate local social service agency applications for 5310 funding.
 - Develop and maintain a coordinated transit plan for the region consistent with the 5310 program.
 - Assist local communities and transit agencies in establishing park-and-ride lots for carpooling, vanpooling, and transit.
 - Assist in the development, implementation, and coordination of bicycle and pedestrian transportation facilities and programs throughout the region.
 - Assist in the planning, programming, and implementation of projects funded by the STBG-TA and CMAQ programs.
 - Promote and facilitate the implementation of intelligent transportation systems (ITS) to improve the transportation system efficiency and management.
- 6) Provide travel demand forecasting, transportation planning information and technical assistance in support of development and implementation programs.
- Partner with state DOT's on regional traffic and ITS operations programs for implementation of cross jurisdictional traffic signal timing, operation, maintenance, and freeway active traffic management.
 - Arrange and conduct seminars and/or develop educational materials for county, township and municipal staff and officials. Topics would include access management, transportation planning, roadway financing, right-of-way preservation, site impact studies, traffic control and regulation, bicycle/pedestrian planning and design, and others.
 - Provide transit planning assistance to transit agencies.
 - Continuation of the planning and implementation requirements of the Americans with Disabilities Act (ADA).

- Provide travel demand forecasts for KYTC, ODOT and INDOT projects.
 - Provide process-related assistance in arranging and conducting public meetings and community outreach activities.
 - Provide technical data and assistance to transportation corridor and facility studies.
 - Incorporate the requirements of Section 11206 amounting to a minimum of 2.5% of planning funds (PL) funding to be used to increase safe and accessible options for multiple travel modes for people of all ages and abilities.
 - Incorporate the requirements of Section 11201 of IIJA in the MPO Planning Process. This includes:
 - Consultation with officials responsible for housing,
 - Utilizing web-based tools for public involvement,
 - Clarification on the requirements when multiple MPOs cover the same urbanized area,
 - Clarification of the requirements when designating MPO officials or representatives.
- 7) Improve the efficiency by which goods are transported, transferred among modes, and distributed within and beyond the region. Continue freight planning and improvement in the efficiency of intermodal freight operations.
- 8) Involve a broad spectrum of agencies and the public, including communities in all aspects of transportation planning. OKI will maintain a robust participation plan.

RESPONSIBLE PARTY

All work will be performed by OKI staff except as noted. Consulting firms are used to supplement staff resources as needed and as noted in the individual work elements and also in the budget tables. OKI's procurement procedures are consistent with (Federal Super Circular) 2 CFR 200. Transit section 675 is the responsibility of the respective transit agencies.

SUPPORT AND ASSISTANCE FROM STATE & FEDERAL AGENCIES

The Ohio Department of Transportation, the Kentucky Transportation Cabinet, the Indiana Department of Transportation, the FHWA and the FTA support and assist OKI in many ways, including provision of a district representative, traffic count data, and TIP programming information, all of which are essential to the ongoing planning process. OKI has planning agreements, including planning MOA and conformity MOA with state DOT's and transit agencies. These can be found in the Prospectus (Appendix D).

SUMMARY OF KEY AGENCY PROGRAMS AND ACTIVITIES

There are three key documents produced by the metropolitan planning process: the Unified Planning Work Program, The Metropolitan Transportation Plan and the Transportation Improvement Program. These and other important activities are discussed below.

Unified Planning Work Program (UPWP) (Update Schedule: Yearly; Next Update: May 2026)

This document, prepared annually by OKI in cooperation with local and state officials, transit agencies and others, documents all planning activities anticipated during the fiscal year regardless of funding sources, while incorporating the comprehensive multi-modal planning process. This continuous planning process is responsive to the needs of the local area and to the changes occurring in the region for which current data concerning land use, travel and transportation facilities must be

continuously maintained.

OKI Metropolitan Transportation Plan (MTP) (Update Schedule: every four years; Next Update: June 2028)

The OKI Board of Directors adopted the OKI 2050 Metropolitan Transportation Plan on June 13, 2024. The MTP is amended as necessary. The MTP meets all the requirements of the Infrastructure Investment and Jobs Act (IIJA) federal planning regulations. The MTP is required to be updated every four years and serves as a blueprint for transportation projects in the region through the year 2050. At the same time, it responds to IIJA and Clean Air Act requirements that call for mitigating congestion, optimizing safety, and addressing air quality and other environmental, social and financial issues. As guidance becomes available the Plan will be amended as necessary to integrate any new requirements of IIJA.

This MTP meets federal regulations requiring fiscal constraint and air conformity requirements. The MTP includes sections related to community impacts. This MTP provides the framework for corridor studies and other initiatives.

Transportation Improvement Program (TIP) (Update Schedule: every two years; Last Update: May 2025. Next Update: May 2027)

This document is normally developed every two years and reviewed periodically in cooperation with state and local officials, regional and local transit operators and other affected transportation, regional planning and implementing agencies. The TIP consists of improvements recommended from the short-range planning process, elements of the transportation plan and the transit development programs of the various transit systems. Specifically, the TIP: 1) identifies transportation improvements recommended for advancement during the four-year program period; 2) indicates the area's priorities; 3) groups improvements of similar urgency and anticipated staging into appropriate staging periods; 4) includes realistic estimates of total costs and revenues for the program period, including year of expenditure cost estimates; and 5) is financially constrained. The entire TIP is tested to establish its conformity with the State Implementation Plan for air quality.

The TIP includes individual and group project listings which are modified periodically and contain: 1) sufficient descriptive material of work, termini and length to identify the project; 2) estimated total project cost which may extend beyond the four years of the TIP, as well as the amount of federal funds proposed to be obligated during the program year; 3) proposed source of federal and non-federal funds; and 4) identification of the recipient and state and local agencies responsible for carrying out the project.

Transportation Air Quality Conformity and Emissions Analyses

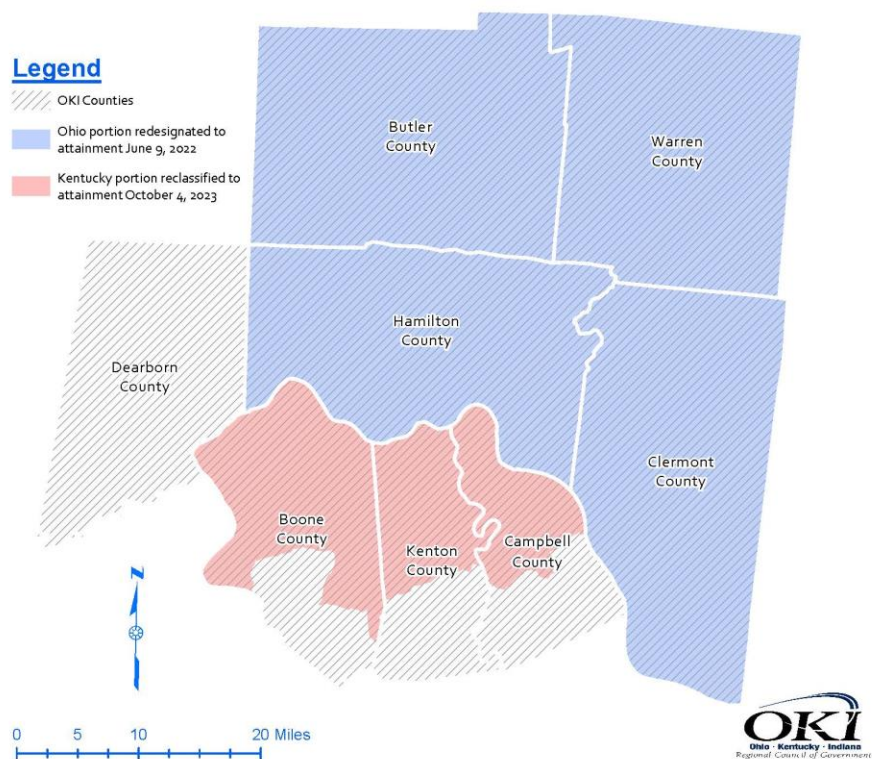
The 2015 Cincinnati ozone maintenance area includes full of the Ohio counties of Butler, Clermont, Hamilton, and Warren; and the Kentucky counties of Boone, Campbell, and Kenton. On June 9, 2022, the U.S. Environmental Protection Agency (EPA) found that the Cincinnati, Ohio area had attained the 2015 ozone National Ambient Air Quality Standard (NAAQS) and acted in accordance with a request from the Ohio EPA to redesignate the Ohio portion of the area to a maintenance area. In October 2023, EPA found that the Kentucky portion of the Cincinnati area had also attained 2015 ozone NAAQS and has been redesignated to a maintenance area. Maintenance areas must still demonstrate transportation conformity. Transportation conformity is a mechanism to ensure that federal funding and approval are given to those transportation activities that are consistent with air quality goals as contained in the air quality State Implementation Plans (SIPs). OKI is responsible for the air quality conformity determination for the region's Transportation Plan and Transportation

Improvement Program.

In February 2018, the U.S. Court of Appeals for the D.C. Circuit issued a decision in *South Coast Air Quality Management District v. EPA*. The decision impacts the Kentucky portion of the Cincinnati area that was formerly nonattainment under the 1997 ozone standard but is now in attainment for all other standards. This “orphan area” includes the more rural southern tier of Boone, Campbell, and Kenton counties. This area has not been subject to conformity since the 1997 ozone standard was vacated. OKI will continue to qualitatively demonstrate Kentucky’s conformity with the 1997 standards for future MTP and TIP amendments.

OKI has performed transportation air quality conformity analysis for the region’s MTP and TIP, most recently for the updated OKI 2050 Metropolitan Transportation Plan and OKI FY2024-FY2027 TIP in June 2024. OKI has coordinated the process of developing local emission reduction strategies in support of the SIPs and has provided the state agencies with mobile source emissions inventories, including a technical document, for the Cincinnati region ozone redesignation. OKI has analyzed the air quality benefits of all candidate transportation projects subject to OKI’s project prioritization process. OKI has prepared documentation supporting CMAQ eligibility for selected projects by documenting forecasted mobile source emissions reductions. As requested, OKI has provided technical support for evaluating the air quality benefits of candidate CMAQ projects in Kentucky.

Cincinnati Ozone Area - 2015 Ozone Standard



Corridor and Special Studies

OKI has been a leader both regionally and nationally in initiating and managing corridor studies. Since 1997, 21 corridor and/or special studies have been completed by OKI. The latest is the *OKI Freight Plan* which was completed in 2023. The corridor studies permit detailed evaluation of problems and potential solutions. The agency is in the process of updating the Strategic Regional Policy Plan (SRPP).

Performance-based Planning

Performance-based transportation planning continues under IIJA. With it comes emphasis from FHWA and FTA on integrating systems management and operations. It encourages us to look at more ways to optimize existing transportation facilities either through advanced technologies or strategies. OKI will fully participate in the target setting and monitoring of national performance goals and asset management.

Transportation System Management & Operations (TSMO)

FHWA has developed Transportation Systems Management and Operations (TSMO), which is a set of strategies that focus on operational improvements that can maintain and even restore the performance of the existing transportation system before extra capacity is needed. The goal is to get the most performance out of the existing transportation facilities. OKI has incorporated TSMO into the agency's MTP and Project Prioritization Process.

Congestion Management Process (CMP)

The OKI region's quality of life and economic competitiveness are closely related to the degree to which the transportation system can provide an acceptable level of mobility. The importance of congestion is reflected in federal transportation rules requiring a Congestion Management Process (CMP) in metropolitan areas. The CMP shall provide "for safe and effective integrated management and operation of the multimodal transportation system" and result in "performance measures and strategies that can be reflected in the metropolitan transportation plan".

OKI's CMP identifies appropriate performance measures to assess the extent of congestion. It establishes a coordinated program for data collection and system performance monitoring to define the extent and duration of congestion. For the purpose of monitoring system performance, OKI has identified a regional Congestion Management Network. The CMP network includes about 1,480 road miles that carry nearly 78% of the total regional traffic. Ongoing system monitoring is accomplished through various data acquisition techniques including: 1) data-base management of traffic count data performed by OKI and its partners; 2) travel time surveys on the network beginning with the National Highway System (NHS) and by making use of INRIX and NPMRDS data; 3) acquisition of transit ridership data and operational data from transit operators; 4) periodic inventory of freight operations/data in the region, including ATRI; 5) periodic field review of the region's highway system attributes; 6) detailed travel data in ongoing transportation corridor study areas; and 7) a framework for evaluating the effects of system improvements (performance measures).

The CMP also identifies and evaluates appropriate congestion management strategies for the improved safety of the existing and future transportation system. OKI produces a comprehensive CMP analysis report every four years, coinciding with the development of OKI's Metropolitan Transportation Plan. The last CMP analysis report was completed in Spring 2020. The 2020 report documents the procedures and findings from the fifth 4-year data collection cycle that was completed in 2019 and compares transportation system performance at key intersections and segments of the CMP network to earlier data. An update to the CMP is part of this work program.

Transit Planning Assistance

OKI provides ongoing transit planning assistance to all federally-funded public transit systems in the region: Southwest Ohio Regional Transit Authority (SORTA), Transit Authority of Northern Kentucky (TANK), the Middletown Transit System (MTS), Clermont Transportation Connection (CTC), Warren County Transit Service (WCTS) and the Butler County Regional Transit Authority (BCRTA), City of Cincinnati Streetcar (Cincinnati Bell Connector). At the request of the region's transit agencies, OKI began facilitating ongoing collaboration meetings in November 2021. This effort is ongoing.

Section 5310 Program

OKI, as the designated recipient of the Section 5310 federal funds in the Cincinnati urban area, is responsible for managing an Enhanced Mobility of Seniors & Individuals with Disabilities Program to provide Federal funding to agencies located in Butler, Clermont, Hamilton and Warren counties in Southwest Ohio; Boone, Campbell and Kenton counties in Northern Kentucky and Dearborn County in Southeast Indiana.

OKI maintains a Coordinated Public Transit – Human Services Transportation Plan to identify service gaps and strategically prioritize 5310 funding investments. Each year, OKI conducts a call for 5310 project proposals and awards funding using a competitive selection process. OKI monitors projects and reports activity progress to FTA through the project and useful life benefit periods.

Transportation Alternative Program (STBG-TA)

The Transportation Alternative Program continues under IIJA. States are required to sub allocate a portion of these funds to MPO's. OKI administers a competitive process for the region's counties (for Ohio and Kentucky).

Technical Services

OKI is a service organization. OKI staff provides support whenever possible to units of local government in the areas of transportation planning, geographic information systems (GIS), software applications (apps), land use and comprehensive plan guidance, small area traffic forecasts and process consultation.

RideShare

OKI's RideShare service has been operational for more than 30 years. RideShare is a voluntary, employer-oriented activity to increase vehicle occupancy, decrease miles of travel and improve air quality. The OKI staff actively promotes and operates RideShare, including providing matching services to area commuters. The strategies include direct marketing to major employers, their employees, the public, and community groups. Promotional tools include freeway and arterial signing bearing the 241-RIDE telephone number, bus signs, brochures, radio and print advertising and the Guaranteed Ride Home program. Programmatic and financial management of vanpool services in the region will continue.

Participation Plan, Title II, Title VI, ADA and Section 504

In 2022, the agency adopted an updated Participation Plan ahead of schedule to incorporate processes for remote (virtual) meetings due to COVID-19. OKI is dedicated to ensuring a fair and equitable planning process and business practice. The OKI Participation Plan outlines LEP processes for consultation practices related to the Disadvantaged Business Enterprises (DBE), Title II, Title VI

and Section 504 of Rehabilitation Act of 1973 requirements. OKI has dedicated staff to ensure compliance with and support of the Council's responsibilities and practices related to these issues.

Strategic Regional Policy Plan

Pursuant to its charge of maintaining a comprehensive, cooperative, and continuing transportation planning process, OKI adopted a strategic regional policy plan (SRPP) in 2005. Significant public and stakeholder engagement enabled comprehensive updates to the SRPP in 2014 and 2023. The current SRPP is maintained as a digital plan at www.howdowegrow.org. The plan was prepared to save limited tax dollars through better coordination of local land use planning and regional transportation planning. Specifically, the plan encourages land use patterns that promote multimodal travel and the efficient use of land, natural resources, and public facilities. OKI staff continues to work with the Land Use Commission to update, refine and implement the SRPP Policy Recommendations. Staff continue dialog with stakeholders and the public using social media platforms. OKI staff will engage stakeholders to review the significant regional issues and opportunity areas identified by this plan and work to advance policy recommendations through collaboration with regional partners and by leveraging other work program activities.

General Coordination Efforts Between OKI, State DOTs, FHWA, FTA, Local Transit Agencies

OKI has worked closely with ODOT, KYTC, INDOT, Federal Highway Administration (FHWA), Federal Transit Administration (FTA), Environmental Protection Agency (EPA), SORTA, TANK, Clermont Transportation Connection, Warren Co. Transit, BCRTA and City of Cincinnati Streetcar in developing the multimodal approach to planning for the region. OKI has also coordinated with and has been a participant in the development of many studies including each of the statewide transportation plans, TANK'S recently adopted Transit Network Study (2020) and SORTA's Bus Rapid Transit Study (2022). OKI shares data with the various planning partners and agencies and provides technical assistance whenever possible.

Professional Development

Professional development of staff is critical to OKI's success and ability to provide excellent service and expertise for our region. Use of PL funds is an eligible expenditure under USC Title 23. Staff make every attempt to identify the professional development activities for the fiscal year and are listed under the individual work elements on the following pages. For planning and budget purposes a placeholder may be used to allow for opportunities not yet known as of the publication date of this document. OKI will only engage in activities directly related to the implementation of the programs and projects identified in this UPWP. As appropriate, prior approval will be requested from funding agencies.

FY 2026 UNIFIED PLANNING WORK PROGRAM HIGHLIGHTS

- 1) **601 Short Range Planning:** Assistance to local jurisdictions including pedestrian and bike planning, the continuation of an active transportation alternatives (STBG-TA) program and complete streets planning.
- 2) **602 Transportation Improvement Program:** Prioritization of projects to be funded with OKI STBG, CMAQ and TA funding. Ongoing posting and monitoring of performance measures as required by IIJA. Maintenance of the FY2026-2029 TIP.
- 3) **605 Continuing Planning - Surveillance:** Updated software applications for managing and presenting planning data. Respond to data requests for demographic data. Continued travel model development including update of the mode choice model. Programs, algorithms, models and dashboards which inform and provide data for the transportation planning process.
- 4) **605.6 Security and Emergency Response (Local):** OKI local funds to collect and process non-transportation datasets for use in the Raven911 system for first responders.
- 5) **610.1 Transportation Plan:** Continue an aggressive performance-based planning program including congestion management (CMP) process and use of INRIX and NPMRDS data. Alternative fuel infrastructure planning and Carbon Reduction Program implementation.
- 6) **610.4 Land Use:** implementation of the new resiliency factor in the OKI Project Prioritization Process, involving flooding and landslides.
- 7) **610.5 Fiscal Impact Analysis Model – Technical Development:** Ongoing maintenance and technical assistance features and functionality of the model.
- 8) **625.2 Transportation Services - Participation Plan:** Development of collateral transportation materials. Active social media program for informing citizens and businesses about transportation issues. DBE and Title VI related services. Execution of the agency's Participation Plan.
- 9) **665.4 Regional Clean Air Program:** OKI's Clean Air Program will once again strive to advance the "Do Your Share for Cleaner Air" message through a variety of media. OKI will continue to participate in a multi-agency workgroup for electric lawn and garden rebate/discount programs funded by EPA.
- 10) **667.1 Commuter Assistance Services - RideShare:** Continue to provide transportation alternatives to commuters within the Tri-State area to reduce energy use, traffic, and pollution.
- 11) **674.3 Transit Planning Activities (5310):** Activities include the administration of the 5310 transit funds for private, non-profit entities. Monitor subrecipient agencies.
- 12) **674.4, 674.5 Transit Planning Activities 5310 Program Pass Through:** FTA 5310 Funds awarded to private non-profit agencies for transportation capital and services. Maintenance of transit asset management plan (TAM).
- 13) **675.1/675.2/675.3/675.4/675.5/675.6/675.7 Mass Transit Exclusive Planning Studies:** Conduct transit planning and programming activities in the OKI region. Work performed by area transit agencies or their consultants.
- 14) **684.3 Ohio Exclusive (PL):** A traffic data collection effort will be undertaken for the Ohio portion of the region.
- 15) **685.5 Indiana Exclusive (SPR):** Activities associated with the 3C planning process, including data collection and processing, GIS, and travel modeling.
- 16) **686.1 Kentucky PL Discretionary - Kenton County Transportation Plan Update –** OKI will assist in the development of the Kenton County Transportation Plan. Major activities include a transportation needs assessment and prioritized list of recommendations and cost estimates.
- 17) **686.2 Kentucky PL Discretionary - Boone County Transportation Plan Update –** OKI will update the 2018 Boone County Transportation Plan. Major activities include a transportation needs assessment and prioritized list of recommendations and cost estimates.

- 18) **686.3 Kentucky Exclusive: Transportation Planning Activities:** Transportation Planning work specific to Kentucky portion of the region.
- 19) **695.1 Unified Planning Work Program:** Develop, produce, and disseminate a UPWP that responds to metropolitan transportation planning requirements. Prepare mid-year and year-end performance reports.
- 20) **697.1 Transportation Program Reporting:** A transportation report summarizing the major findings and activities of the OKI transportation planning process.
- 21) **720.1 Mobile Source Emissions Planning:** Conformity analysis for Plan and TIP amendments. Quantification of the expected air quality and energy benefits of candidate projects for STBG, SNK, TA, CMAQ and Carbon Reduction Program funding. Assistance to state air agencies.
- 22) **710.1 Local Water Quality Activities:** Provide technical support for local agencies as time and resources permit.
- 23) **710.2 Regional Water Supply (OEPA/ODNR):** Develop a Comprehensive Climate Action Plan (CCAP), and a Status Report for the Cincinnati OH-KY-IN MSA (Cincinnati MSA or MSA) as required by the US Environmental Protection Agency (USEPA) Climate Pollution Reduction Grant (CPRG) Program.
- 24) **710.6 Water Quality Program (Ohio EPA):** Permit consistency reviews, associated plan amendments as appropriate and public information products as detailed in OKI's contract with Ohio EPA.
- 25) **710.9 Water Quality Program (Ohio General Assembly):** Updated Water Quality Management Plan and associated plan amendments.
- 26) **800.1 Regional Planning Activities:** Analyses of national and regional land development trends, conditions, and issues; and technical assistance on issues including land use, zoning, economic development, housing, water and sewer infrastructure, intergovernmental coordination, capital budgeting, and natural systems. Provide support for the OKI Regional Planning Forum and the OKI Planning Directors' Network.

TRANSIT AND MULTI-MODAL PLANNING

The OKI FY 2026 transportation planning program emphasizes the implementation and documentation of the transportation planning activities which will advance the region's ability to meet the future travel needs of the OKI region. Many of the program elements deal specifically with transit and multimodal planning. Following are project descriptions/justification of those elements:

Element	Description	Product Number (#)	Page
601	Short Range Planning	Planning assistance – (2)	14
602	TIP	Program of projects (1-4,6-9)	14
605	Continuing Planning – Surveillance	Collection & integration of transit data into upgraded travel model: (1-4,12)	15
610.1	Transportation Plan	Coordination with transit agencies (1-4,7,8,13)	17
610.4	Land Use	Research and collaboration regarding the connections between transportation & land use (2,6)	18
625.2	Transportation Services	(all)	19
667.1	RideShare	Guaranteed ride home program (3)	20
674.3	5310 Program	(all)	20
675.1	Southwest Ohio Regional Transit Authority (SORTA)	Local Transit Agency Planning (all)	21
675.2	Transit Authority of Northern Kentucky (TANK)	Local Transit Agency Planning (all)	22
675.3	Middletown Transit System (MTS)	Local Transit Agency Planning (all)	23
675.4	Clermont Transportation Connection (CTC)	Local Transit Agency Planning (all)	23
675.5	Butler County Regional Transit Authority (BCRTA)	Local Transit Agency Planning (all)	23
675.6	Warren County Transit Authority (WCT)	Local Transit Agency Planning (all)	24
675.7	City of Cincinnati Streetcar (CBC)	Local Transit Agency Planning (all)	24
720	Mobile Source Emissions Planning	All	29

601 – SHORT RANGE PLANNING

GOALS

To address short-term problems and needs relating to transportation of people and goods in the OKI region, and to identify actions that present a systematic approach to solving these problems.

To coordinate with units of local government regarding the development and adoption of access management plans, thoroughfare plans, complete streets and other studies.

To utilize the transportation planning expertise and resources of the OKI staff in providing data, technical assistance and planning services.

To administer the federal Transportation Alternatives program for funding sub-allocated to OKI from KYTC and ODOT.

To provide training and support to public and private non-profit agencies to enhance and improve transportation capabilities and resources, through workshops, and notifications of educational and/or training opportunities.

To further the goals of the OKI Complete Streets Policy adopted November 2022.

PRODUCTS (all are Section 11206 eligible)

- 1) Documentation supporting technical assistance to local communities in various elements of transportation/bicycle/pedestrian planning, engineering, etc. including ongoing maintenance of the regional trails inventory and updated bicycle guide/map. (as needed)
- 2) Administration of OKI's STBG-Transportation Alternatives. (ongoing)
- 3) Participation in non-motorized planning activities including Walk.Bike.Ohio and maintaining Complete Street Policy.

602 - TRANSPORTATION IMPROVEMENT PROGRAM

GOAL

To develop and manage an effective, multi-year Transportation Improvement Program (TIP) that identifies and prioritizes transportation improvements. Projects are to be consistent with transportation plans and studies developed through the urban transportation planning process. The TIP is fiscally and air quality constrained.

PRODUCTS

- 1) Staff will monitor and expedite projects in the region using OKI allocated federal funds through meetings with ODOT, KYTC, and local sponsors; work with ODOT District 8 to lock-down projects for fiscal year 2027. (ongoing)
- 2) TIP Amendments and TIP Administrative Modifications. (ongoing)
- 3) Management of the Project Prioritization Process. (6/30/26)
- 4) Continued maintenance and refinement of the TIP website to include access to current TIP listing, maps as well as upcoming amendments and federal funding opportunities. (as necessary)
- 5) Regional prioritization of TRAC applicant projects. (as requested)

- 6) Regional prioritization of KY CMAQ applicant projects. (as requested)
- 7) An annual listing of obligated transportation projects funded with federal funds will be published within 90 days of the end of the state fiscal year for Ohio and Indiana projects (9/30/25) and within 90 days of the end of the federal fiscal year for Kentucky projects. (12/31/25)
- 8) Annual self-certification of the metropolitan planning process. (5/26)
- 9) The TIP will include transportation performance measures which will be tracked, evaluated and updated over time. The TIP shall include a description of the anticipated effect of the TIP towards achieving the performance targets identified in the MTP, linking investment priorities to those performance targets. (ongoing)

605 – CONTINUING PLANNING - SURVEILLANCE

GOALS

Develop and maintain, on the appropriate update cycle, the basic data essential to transportation planning activities. Such a database represents current conditions within the region and permits comparison to previous as well as forecast periods to determine the impact of changing development and travel patterns. Develop and maintain demographic data, GIS data and tools, and related datasets.

Develop and maintain a travel demand model capable of estimating current and forecasting future trip making behavior and travel patterns as well as assessing the impacts of proposed changes in land uses, transportation system, travel demand management strategies, and transportation control measures.

Develop and maintain data and data processing tools that generate input to the vehicle emission model for the air quality modeling.

Apply travel and traffic data alongside travel demand and mobile emission models to support transportation planning, air quality analysis, and traffic studies in OKI region.

PRODUCTS

- 1) Updated and refined transportation system characteristics data files, including a refined TAZ system, the up-to-date base year highway and transit networks, updated future year (2030, 2040, and 2050) highway and transit networks with the TIP and LRP projects coded, and other transportation supply data files. (ongoing)
- 2) 2024 transit ridership data and the updated transit on-board survey data incorporating revised weights and opposite trips. Updated traffic database with more historical and up-to-date traffic counts. Transportation system performance dataset, including the speed, travel time, and trip Origin-Destination pattern data. Maintain traffic counting equipment and capabilities (potentially by purchasing additional equipment). Programs and tools for the traffic count data compiling, cleaning, validation, and quality control. (ongoing)
- 3) A model integrated with the new zone system and network, prepared for validation against 2025 traffic conditions. Adopted MOVE5 air quality model that generates emission estimates based on regional system performance measures from travel demand model and other data sources. Well-designed data processing routines that compile traffic data, generate input and summarize output for travel demand and air quality models. Streamlined internal workflow for presenting model data. (ongoing)

- 4) Travel demand forecast and traffic impact analysis service to the stakeholders. Application of the travel demand model and air quality model on regional planning and other transportation and traffic studies. (ongoing)
- 5) Attend the Transportation Research Board (TRB) Annual Meeting and TRB Conference on Modeling Mobility and present findings in travel demand model development, improvement, and application. Attend the quarterly ODOT travel demand model user group meetings. Attend model and software training. Attend the semiannual KYTC travel demand model user group meetings. (as appropriate)
- 6) Updated and refined transportation system characteristics data files, including the up-to-date base year highway and transit networks, updated future year (2030, 2040, and 2050) highway and transit networks with the TIP and LRP projects coded, and other transportation supply data files. (ongoing)
- 7) Revise the current zonal socioeconomic files for base year, interim years, and future horizon years as needed and provide any supplemental data necessary for air quality conformity or travel demand modeling activities. (as necessary)
- 8) Provide support to the U.S. Census Bureau and process any data requests from local governments, citizens and others (as requested). Attend Population Association of America and American Planning Association events to stay up to date on best practices using Census data and general demographic data analysis techniques. (ongoing)
- 9) Maintain and update demographic webpages on the OKI website (ongoing).
- 10) Fulfilled demographic data requests. (ongoing)
- 11) Up-to-date development database. (ongoing)
- 12) Up-to-date GIS software. (as necessary)
- 13) Updated geographic databases. (ongoing)
- 14) New online and up-to-date web mapping applications. (as needed)
- 15) Participation in regional homeland security efforts such as the Emergency Preparedness Collaborative. Improved GIS data sharing and collaboration within the regional homeland security community including presentation to stakeholders and community leaders and funding agencies as appropriate. (ongoing)
- 16) Crowd sourced data collection applications. (as needed)
- 17) New IoT data collection devices. (as appropriate)
- 18) Programs, algorithms, models and dashboards which inform and provide insight into the transportation planning process. (as appropriate)
- 19) New UAV collected spatial databases. (as needed)

605.6 – SECURITY & EMERGENCY RESPONSE (Local funding)

GOAL

Develop, maintain and implement regional Geographic Information System (GIS) data sets, which are capable of supporting Security and Emergency response efforts in and across the Greater Cincinnati Region.

PRODUCTS

- 1) Up-to-date GIS layers used to support security planning, emergency, and resiliency response efforts. (ongoing)
- 2) Monthly system status checks and an operational system. (ongoing)
- 3) Partners contributing to the ongoing success of the system. (ongoing)

610.1 – TRANSPORTATION PLAN

GOAL

To conduct a performance-based metropolitan planning process in improving the management and operation of the transportation system through continued cooperation, communication and coordination.

PRODUCTS

- 1) The MTP, TIP and other planning documents will reflect performance measures (including transit asset management and transit safety) and targets developed cooperatively with state and local partners and the progress towards meeting those targets. The OKI Board will adopt targets by resolution as appropriate. Ongoing maintenance and updates to the Performance Measures website.
- 2) Amended *OKI 2050 Metropolitan Transportation Plan* and Plan amendments as necessary. (6/26).
- 3) Coordination with ODOT, KYTC, local governments, transit agencies, public ports and private transportation providers on options for improving the management and operation of the existing system and future improvements. Participation in regional, state and national forums on transportation planning issues, including updates of state DOT transportation plans, other cross jurisdictional transportation cooperative planning activities and data sharing. (ongoing)
- 4) Updated roadway functional class system (as needed).
- 5) Updated performance-based Congestion Management Process. Speed data from FHWA, ODOT and KYTC will be integrated into the OKI travel time database to allow for the estimation of travel time reliability and travel time indices. (as appropriate)
- 6) Amended ITS architecture. (as necessary)
- 7) Project development activities for future transportation corridor or special studies. (as appropriate)
- 8) Identification of high crash locations. Cooperation with ODOT, KYTC in the review of their SHSP. Safety performance measures and targets monitoring and reporting. (on-going)
- 9) Continued outreach and coordination with public and private freight and economic development stakeholders. Development of the freight component of the regional transportation system. Continued update and enhancement of freight data resources. (ongoing). Amendments as needed to the OKI Freight Plan.
- 10) Revised OKI Project Prioritization process. (as appropriate)
- 11) Development of planning techniques and evaluation methods that will assist deployment of advanced transportation materials, methods and/or new technologies. (06/26).
- 12) Coordination with local transit agencies including Butler County Regional Transit Authority, Clermont Transportation Connection, Middletown Transit System, Warren County Transit, and Cincinnati Streetcar to maintain transit asset management and safety plans. Staff will work to integrate all resulting targets from those plans into OKI's planning process. (on-going)
- 13) Consultations with energy industry, local public works and other energy experts related to the transportation system and continued discussion of potential electric and other alternative fuel infrastructure strategies to inform planning of a sustainable infrastructure system that works for all users. (ongoing)

610.4 – LAND USE (STBG)

GOAL

To maintain and implement the Strategic Regional Policy Plan (SRPP) and strengthen the linkage between transportation policy and land use. Provide guidance and assistance to local governments as local comprehensive planning efforts occur and as local standards and development criteria are created.

PRODUCTS

- 1) Documentation of presentations and coordination on the land use/transportation relationship, trends and distributed materials.
- 2) Active participation with Green Umbrella and Taking Root organizations helping to ensure the alignment of regional planning goals. (ongoing)
- 3) Consultations with multidisciplinary agencies related to the transportation plan and continued discussion of potential environmental strategies that are regional in scope, potential environmental mitigation activities and potential areas to carry out these activities. Active promotion and technical support for the OKI Greenspace Environmental and Mitigation Mapper (GEMM). (ongoing)
- 4) Maintained OKI Housing Dashboard online interactive calculator for local community use for housing planning and policy formulation. (ongoing)
- 5) Staff will explore methods to integrate housing issues, tourism, and natural disaster risk reduction with the transportation plan. Staff will identify appropriate responsible officials and experts related to each topic and work to engage each in the development of the metropolitan transportation plan. (ongoing)
- 6) Research summary of applicable methods and techniques gained from webinar, seminars, and workshops (as applicable)
- 7) Maintained www.HowDoWeGrow.org SRPP website with current regional trends and conditions related to the SRPP. Updated Regional Planning Forum website with Community Choices Guides including FIAM and Housing, and documentation of distribution of local comprehensive plan guidance and of technical assistance provided. (ongoing)
- 8) Maintained OKI Tree For Me online tool, tree distribution reports, and tree benefit reports. (as necessary)

610.5 – FISCAL IMPACT ANALYSIS MODEL (STBG)

GOAL

To continue to maintain and refine the OKI Fiscal Impact Analysis Model (FIAM). Transportation investment stimulates economic development and land use change. The FIAM implements a recommendation of OKI's Strategic Regional Policy Plan by increasing local governments' understanding of the costs and benefits of development. The FIAM helps local governments to capitalize on the potential land use changes related to these transportation investments by analyzing the costs and benefits of alternative land use scenarios. The FIAM uses local government budgetary, land use, population, and employment statistics to estimate costs and revenues of development using current local government budget data.

PRODUCTS

- 1) Documentation of technical assistance provided. (ongoing)

- 2) Additional data and analysis for new communities using the fiscal impact analysis model. (as appropriate)
- 3) Documentation of expanded functionality including consultant services. (as appropriate)

PID 118927

625.2 – TRANSPORTATION SERVICES

GOAL

To coordinate and execute OKI communications to all people to enhance and support OKI's transportation information and planning processes for the people and the region. To incorporate Title VI and Section 504 of the Rehabilitation Act of 1973 into OKI's planning process to ensure the participation of all interested people, including those who are traditionally underserved. OKI will continue to implement a Participation Plan (PP) using print, digital and in-person methodologies and will continually explore new methodologies relative to the fair and meaningful involvement of all people.

PRODUCTS

- 1) An effective Participation Plan and customized outreach plans, including print, digital, traditional and earned media as appropriate, for OKI studies, projects and activities, and monitored for effectiveness. (ongoing)
- 2) Engagement with the OKI Community Advisory Committee and regional groups representing mobility impacted populations, and communities with high populations of mobility impacted persons. An updated Title VI Program Plan (annually for KYTC, through the annual Compliance Questionnaire for ODOT, and triennially for FTA). Dissemination of contracting opportunities to the OKI DBE/SBE Vendor list, as appropriate. (ongoing)
- 3) General networking, in-person community outreach and the provision of speakers in support of OKI's transportation planning, activities and information sharing with the public, government officials, business associations, industry groups and more. Development of associated collateral materials. (ongoing)
- 4) Information, activities and plans which best identify, understand and incorporate the needs of the region and its diverse communities through meaningful public engagement. (ongoing)

665.4 – SPECIAL STUDIES: REGIONAL CLEAN AIR PROGRAM

GOAL

To continue the Regional Clean Air Program designed to reduce outdoor pollution levels through outreach and education to protect public health, the local economy and attain national ozone and particulate matter standards.

PRODUCTS

- 1) An outreach program geared toward the reduction of pollutants in the eight county airshed. (ongoing)
- 2) Develop an outreach program for the electric lawn and garden rebate/discount program, contact lists and other outreach strategies. (ongoing)

667.1 – COMMUTER ASSISTANCE SERVICES: RIDESHARE

GOAL

To provide transportation alternatives to commuters within the Tri-state area; thereby promoting efficient travel, reducing traffic and pollution, saving money and helping to preserve the quality of life for those who live in the OKI region.

PRODUCTS

- 1) A detailed report of database activities such as additions and counts of applicants provided with match-lists. (on-going)
- 2) Retain existing vanpools through rider recruitment and form new vanpools. (ongoing)
- 3) An accurate GRH database and an efficient reimbursement program. (ongoing)
- 4) Implementation of an annual marketing plan outlining the most effective approaches to increase awareness and participation in all aspects of the OKI RideShare program. (ongoing)

PID 118938

674.3 TRANSIT PLANNING ACTIVITIES (5310)

GOAL

The goal of this program is to provide a means for distributing Section 5310 federal funds apportioned to the Cincinnati urban area. These funds are used by many private, non-profit agencies to acquire vehicles for transportation services offered to their clients and other projects eligible for 5310 funding.

PRODUCTS

- 1) Meetings of the Oversight Team (as needed)
- 2) Update the Section 5310 application packet (as needed) and hold a workshop to explain the application process (as needed)
- 3) Update the OKI Program Management Plan (as needed)
- 4) OKI Program of Projects (7/25)
- 5) Prepare annual progress reports in the TrAMS system of FTA (ongoing)
- 6) Transit Asset Management Plan updates (as needed)

674.4, 674.5 – TRANSIT PLANNING ACTIVITIES 5310 PROGRAM PASS THROUGH

GOAL

The goal of this program is to continue the management of projects and programs for elderly individuals and individuals with disabilities under the Enhanced Mobility of Seniors and Individuals with Disabilities (Section 5310) of Title 49 of the U.S. Code.

PRODUCTS

- 1) Oversight, funding and requisite reporting for the provision of transportation services for seniors and people with disabilities operated by the sub-recipient agencies. (ongoing)

675.1 MASS TRANSIT EXCLUSIVE: SORTA PLANNING STUDIES

GOAL

Conduct planning and programming activities to advance the scope and quality of transit service to users within the SORTA service area.

PRODUCTS

- 1) Bus Rapid Transit (BRT) Planning: SORTA has identified two BRT corridors (Reading Road and Hamilton Avenue) to move forward as part of the BRT Planning process, with a Locally Preferred Alternative (LPA) identified in Q1 2023. In Q1 2025, SORTA is advancing both corridors into 30% design, conducting robust public outreach with the intention to start the Reading Road BRT in 2027-2028 timeframe.
- 2) SORTA Long Range Transit Plan: SORTA's Long Range Transit Plan (LRTP) is currently in the RFP process. We expect to issue a Notice-to-Proceed on this critical study in early Spring 2025.
- 3) SORTA Short-Range Transit Plan: As the update to the service planning part of the overall Reinventing Metro Plan, this plan is underway with a consultant to evaluate short-range (1-5 years) needed improvements to Metro's bus route network. This study should be concluded in Q2-Q3 2025 timeframe.
- 4) Transit Centers: Planning and design will continue for the Walnut Hills Transit Center and North College Hill Transit Center. Both centers will provide customers with enhanced amenities and transfer locations to connect with the SORTA network. In 2025, SORTA will complete NEPA work for both locations.
- 5) Monitoring Rail Projects: SORTA will continue to monitor and maintain bridges, tunnels, and pedestrian facilities along the Oasis and Blue Ash railroad right-of-way. Engineering designs and related construction plans have begun for the highest priority repairs as identified in annual bridge inspection reports. SORTA will continue to work to secure funding for the repairs.
- 6) Corridor and Transportation Study Participation and Assistance: SORTA will continue to participate in corridor studies and other major regional transportation initiatives including the Eastern Corridor Transportation Improvement and Oasis Commuter Rail studies, the Brent Spence Bridge Project, I-75 interchange reconstruction, Western Hills Viaduct replacement, the Oasis and Wasson Way bike trail projects, and the Cincinnati Riding or Walking Network (CROWN).
- 7) FTA Federal Compliance: SORTA will continue to coordinate with partners at OKI and the federal and state levels to develop performance measures and targets consistent with the requirements of the IIJA.
- 8) On Demand Service Planning: MetroNow: SORTA's new mobility on demand (MOD) service has been implemented and is already a booming success, with nearly 10,000 riders per month in the two zones (Springdale-Sharonville and Mt. Healthy/Northgate). In Q2 2025, SORTA will implement its third zone (Forest Park/ Pleasant Run) with the Evendale - Blue Ash zone set to begin in Q4 2025 timeframe.
- 9) Coordination with other Regional Transit Agencies: SORTA will continue to work with the other regional transit agencies on regional fare coordination, procurements and route coordination to make the beginning to end trip for the customer as seamless as possible. SORTA is also coordinating with BRCTA and TANK on an alternative energy and vehicle strategy for the region.
- 10) Monitoring of Existing Fixed-Route Service: SORTA will monitor existing fixed route service using approved performance standards to determine the strengths and weaknesses. SORTA completed an onboard customer attitudinal survey in October 2024 and received over 1,500 surveys. The customer feedback will feed into SORTA's plans and projects. For 2025, SORTA is preparing its 2025-2028 Title VI plan which will include detailed fixed-route monitoring as required by the FTA.

- 11) Regional Paratransit Coordination project: Coordinating with all paratransit providers within OKI region to improve paratransit customers' mobility throughout the entire region. The group is working on implementing 13 projects that include: one-call center; unified reservation system; one-seat trips; a common eligibility process; a regional Mobility Management program; Coordinate Travel Training Programs Regionally; Establish a Cost Allocation Method to Facilitate Shared Trips.

Note: Please refer to budget Table 7 for planning activities, funding source and amounts.

675.2 MASS TRANSIT EXCLUSIVE: TANK PLANNING STUDIES

GOAL

Conduct planning and programming activities to increase the transit system efficiency and advance the quality of transit service to users within the TANK service area.

PRODUCTS

- 1) Performance Analysis- TANK will conduct the calendar year Substandard Route Review (SSRR) by collecting route-level data and applying the following performance measures: Net Cost per Passenger Trip, Cost Recovery, Passenger Trips per Revenue Mile, and Passenger Trips per Revenue Hour. The SSRR allows TANK to identify underperforming routes and make informed decisions on service improvements. In addition, TANK monitors route-level productivity (Ridership per Revenue Hour) every month through the Planning Dashboard.
- 2) TANK will conduct a Transit Development Planning study to formally plan for future transit service and network. The study will study existing ridership and demand, future growth plans, employment trends, and more to plan for efficient and affordable transit services over the next 5-10 years. Planning work for the study will include developing a scope of work and procuring a transit planning consultant.
- 3) TANK will work to validate and approve Automatic Passenger Counters (APCs) for National Transit Database (NTD) reporting.
- 4) Mobile Ticket/Trip Planning Technology – TANK will continue to collaborate with regional partners like SORTA and BCRTA to further improve and expand the Transit app, and modernize fare payment. Projects include moving to account-based ticketing (ABT) and open payment systems. These technology projects are important to continued modernization of fare systems.
- 5) Technology Planning – TANK will implement modules of the CAD-AVL system that aid in improving on-time performance, dispatching, productivity, and customer information.
- 6) Service Request Process – TANK will continue to implement the Service Request Process. This process addresses specific service needs that have been requested of TANK from the community in an effort to better use the organization's resources.
- 7) Regional collaboration—TANK will participate in and contribute to key local and regional planning studies, the OKI's Intermodal Coordinating Committee (ICC), Northern Kentucky planning, transportation, and comprehensive plans/studies.
- 8) Coordinate with partners at OKI and the federal and state levels to develop performance measures and targets consistent with the requirements of Infrastructure Investment and Jobs Act.

Note: Please refer to budget Table 7 for planning activities, funding source and amounts.

675.3 - MASS TRANSIT EXCLUSIVE: MIDDLETOWN TRANSIT SYSTEM (MTS) PLANNING STUDIES

GOAL

MTS FY2026 planning activities will focus on strengthening county and regional partnerships to improve access for City of Middletown residents and visitors to jobs, education, medical, and other opportunities. The work will be performed in partnership with the Butler County RTA (BCRTA) and the NEORide Council of Governments.

PRODUCTS

- 1) Conceptual plans for relocation and/or renovation of the Middletown transit station.

Note: Please refer to budget Table 7 for planning activities, funding source and amounts.

675.4 – MASS TRANSIT EXCLUSIVE: CLERMONT TRANSPORTATION CONNECTION

GOAL

CTC planning activities include the utilization of State and Federal Funding to better maximize the existing transit services, maximize efficiency and increase ridership.

PRODUCTS

- 1) Increase coordination with local agencies, including presentations and group meetings.
- 2) Monitor the fixed route and dial-a-ride service operations for opportunities to increase productivity and reduce costs.
- 3) Participation in regional planning activities with SORTA, TANK, Cincinnati USA Regional Chamber and OKI.
- 4) CTC will coordinate with OKI on inclusion of transit asset management, safety, and other performance measure targets into the planning process.
- 5) CTC will conduct a Transit Planning study to formally plan for future transit service and network. The study will study existing ridership and demand, future growth plans, employment trends, and more to plan for efficient transit services.

Note: Please refer to budget Table 7 for planning activities, funding source and amounts.

675.5 MASS TRANSIT EXCLUSIVE: BUTLER COUNTY REGIONAL TRANSIT AUTHORITY (BCRTA) PLANNING STUDIES

GOAL

BCRTA State FY2026 planning activities will support BCRTA Board of Trustees' and the Transit Alliance of Butler County's mutual efforts to identify transportation needs and leverage available resources to meet those needs effectively and efficiently.

PRODUCTS

- 1) Plans, concept documents and evaluations for future transit infrastructure and the beginning of constructing said infrastructure.
- 2) Data from numerous sources to support implementation and transition to alternative fuel vehicles and planning the expansion of our headquarters.

- 3) New and expanded services for target markets, new partnerships and funding opportunities.
- 4) Plan to monitor and reduce our carbon footprint and the environmental impact of our agency.
- 5) Improved access to local employers and job centers and new tools and quantifiable data regarding need for new, expanded and improved transit services and amenities.
- 6) Identify key stakeholders for future transportation plans and planning to accommodate growth.
- 7) Data to support improved regional connections and address cross-county public transit trips.
- 8) Data to support the feasibility of implementing a rideshare program.
- 9) Data to indicate transit demand near underserved business hubs.
- 10) Data to support the construction of future active transportation and transit infrastructure in the City of Oxford.

Note: Please refer to budget Table 7 for planning activities, funding source and amounts.

675.6 – MASS TRANSIT EXCLUSIVE: WARREN COUNTY TRANSIT

GOAL

Ongoing evaluation of existing transit services to maximize their efficiency. Improve everyday operations through analysis of services and how they are provided to the public. Provide service opportunities to County residents.

PRODUCTS

- 1) Participation in regional planning activities at OKI.
- 2) Continued analysis of scope of service.
- 3) Continued compliance with FTA and ODOT regulations.
- 4) Coordinate with partners at OKI and the federal and state levels to monitor performance measures and targets consistent with the requirements of IJJA.
- 5) Participation in regional coordination encouraging connectivity of neighboring transit systems.

Note: Please refer to budget Table 7 for planning activities, funding source and amounts.

675.7 – MASS TRANSIT EXCLUSIVE: CITY OF CINCINNATI STREETCAR

GOAL

Conduct planning and programming activities to increase the Connector streetcar system efficiency, maintain safety, advance the quality of service, and enhance the experience for users.

PRODUCTS

- 1) Performance Analysis - The Cincinnati Streetcar will continue to analyze performance data and use this data to inform decision making. The enhanced APC data in particular will provide an increased level of specific data available for use.
- 2) Rider/Non-Rider Surveys – The Cincinnati Streetcar will analyze and report on the results of their ridership surveys and compare against the baseline. Staff will use these results to increase the understanding of transit riders and non-riders and identify barriers, needs, and desires in order to increase ridership and improve the customer experience.
- 3) Improved Customer Experience – As we see continued increased ridership following the pandemic, the Cincinnati Streetcar will monitor changes to ridership and assess patterns and anomalies to make modifications or enhancements to improve customer experience and safety,

particularly as employers increase more in person work. The Cincinnati streetcar will be conducting a study to analyze existing headway management and real-time arrival technology to recommend updates and improvements to these systems using the federal Areas of Persistent Poverty grant and local match dollars.

- 4) Regional collaboration – The Cincinnati Streetcar and City DOTE will contribute to key local and regional planning studies, as well as the OKI’s Intermodal Coordinating Committee (ICC), local planning projects and regional Bus Rapid Transit (BRT) initiatives and further integrate into these efforts.
- 5) Funding Sources – The Cincinnati Streetcar will pursue eligible funding sources such as state and federal grants; private foundations; and public/private partnerships to further mass transit, urban revitalization, accessibility and safety.

Note: Please refer to budget Table 7 for planning activities, funding source and amounts.

684.3 – OH EXCLUSIVE: TRANSPORTATION PLANNING ACTIVITIES

GOALS

Data collection and planning activities exclusive to the Ohio portion of the region

PRODUCTS

- 1) Detailed survey of residents of select populations throughout the Ohio counties of the OKI region to identify community transportation needs. (12/25)
- 2) Five (5) AAM Electrification Infrastructure Plans with Budgets, Site Designs and Timelines. (12/25)
- 3) Final quality assured datasets (6/26)

685.5 - INDIANA EXCLUSIVE: DEARBORN COUNTY TRANS. PLANNING (SPR)

GOAL

The goal of this work element is to conduct the 3C planning process for Dearborn County, Indiana including the Statement of Work, TIP and Metropolitan Transportation Plan in support of local and state agencies.

Special Note: For several years, part of Dearborn County was identified as part of the Cincinnati-OKI Urbanized Area. Procedures for urbanized area definition changed with the 2020 Census and Dearborn is no longer considered part of the OKI Metropolitan Planning Organization (MPO). Dearborn and OKI have a mutual interest continuing the relationship and because of the urbanization trend in the county Dearborn County is considered part of the OKI Metropolitan Planning Area (MPA). As such, OKI will continue many of the metropolitan planning functions on behalf of Dearborn County with financial support from INDOT as enumerated below.

TASKS & ACTIVITIES

Task 1: Traffic Count Data Program

- Activity 1: County-wide traffic count program – no activity.
- Activity 2: Special Traffic Counts – Staff will conduct traffic counts for the Congestion Management Program locations in Dearborn and as requested by local governments and INDOT resources permitting.
- Activity 3: Traffic count processing – Staff will process counts taken in-house or by other

partners as part of a comprehensive regional data management program.

Activity 4: Traffic Count Equipment Purchases – no activity.

Task 2: Planning Support to Local Governments

Activity 1: Transportation Plans – Staff will maintain the Indiana portion of the OKI Metropolitan Transportation Plan. Dearborn County remains in the OKI Metropolitan Planning Area (MPA).

Activity 2: Transportation Planning Support – OKI will provide transportation data and/or analysis in the support of local transportation plans and programs. Management of the TIP for Dearborn County. Air quality modeling/conformity determination as required.

Activity 3: Intersection Studies – No activity expected.

Activity 4: Hazard Elimination Studies/Road Safety Audits – No activity expected.

Activity 5: Bicycle and Pedestrian Plans – Provide technical assistance to communities related to bike/ped programs.

Activity 6: Traffic Counting and Forecasting – OKI may conduct traffic counting and/or traffic forecasting as requested by local communities.

Activity 7: Project Evaluation Support – No activity expected.

Activity 8: Title VI Planning – OKI will maintain a Title VI Plan consistent with federal requirements.

Activity 9: ADA Transition Plans – Staff will continue to assist communities when requested.

Activity 10: Asset Management Assistance – Community Crossings Applications planning support.

Activity 11: Red Flag Investigations – No activity expected.

Activity 12: Other Planning Services – OKI will provide planning assistance to communities in Dearborn County for EV infrastructure, freight planning and other activities as appropriate.

Task 3: Planning Support to INDOT

Activity 1: HPMS Data Collection - No activity expected.

Activity 2: Railroad Crossing Inventory – OKI will maintain GIS data layer for this information. No field work is anticipated.

Activity 3: Data Conversion - No activity expected.

Activity 4: ARIES Crash Data Quality Control – OKI staff will review, clean, and publish crash data for use by OKI and INDOT.

Activity 5: Develop Urban Area Boundaries – No activity expected.

Activity 6: Update Functional Classification Data – OKI staff will coordinate and work with INDOT to complete this update.

Activity 7: Performance Measure Assistance – No activity expected.

Activity 8: Meetings and Coordination with Local Officials – As appropriate.

Activity 9: Quarterly Project Tracking – OKI will continue leading the tracking meetings for Dearborn County.

Activity 10: Assist with District Open House/Public Outreach – Conduct outreach related to federally funding transportation plans and programs.

Task 4: Planning Capacity Enhancement

Activity 1: Equipment Purchases – No activity expected.

Activity 2: Training – Attendance at the Annual MPO Conference and Indiana GIS Committee.

Activity 3: Traffic Count Certification - No activity expected.

Activity 4: GIS Systems Development – Geospatial data collection, evaluation and processing for Dearborn County transportation and land use datasets.

Indiana SPR Grant Number: 26P6098

686.1 – KY PL DISCRETIONARY: KENTON CO. TRANSPORTATION PLAN UPDATE

GOALS

The Kenton County Transportation Plan is a comprehensive, multi-modal strategy for improving transportation in Kenton County. It includes an element for linking transportation improvements with the county's future land use. The plan accounts for the importance of transportation in sustaining economic growth and enhancing the quality of life. OKI will lead the development of the plan in partnership with the Kenton County Fiscal Court, PDS of NKY, and the Kentucky Transportation Cabinet.

PRODUCTS

- 1) Establishment and administration of project management tools including; timeline, budget and scope of work
- 2) Identification of goals, objectives and performance measures
- 3) Execution of a public participation program, including special attention to populations with mobility needs, through social media and presentations to OKI members (as needed)
- 4) Identification, compilation and refinement of existing databases specifically for Kenton County
- 5) Formation and analysis of a preliminary, multi-modal Needs Assessment Report including sidewalk inventory (PDS) and supportive visualization techniques
- 6) Procurement of a consultant to assist in Plan development
- 7) Development of a draft prioritized project, policy and program recommendations list which considers anticipated funding availability and identifies cost estimate, implementation timeline and primary public sponsor
- 8) Publish the final plan update document (12/26)

686.2 – KENTUCKY EXCL. (PL Discretionary): BOONE COUNTY TRANSPORTATION PLAN UPDATE

GOALS

Update the Boone County Transportation Plan

PRODUCTS

- 1) Content suggestions, visualizations and materials to support Boone County public engagement. (11/25)
- 2) Existing and Future Conditions Report (8/25)
- 3) Issues and Needs Assessment Report (9/25)
- 4) Informational brief on Advanced Transportation Technologies (11/25)
- 5) Prioritized List of Recommendations with Cost Estimates and a Project Sheet for each Recommendation (11/25)

- 6) Summary Report: Program, Study, and Policy Recommendations (11/25)
- 7) Executive Summary (11/25)

686.3 – KENTUCKY EXCLUSIVE: TRANSPORTATION PLANNING ACTIVITIES

GOAL

This work element is for safety, operational, special studies or data collection efforts focused specifically on Northern Kentucky.

PRODUCTS

- 1) OKI will maintain Continuing Highway Analysis Framework (CHAFs) for all Kentucky projects recommended in the *OKI Metropolitan Transportation Plan* and other transportation-related studies per guidelines established by KYTC. OKI will maintain and revise the CHAF and SHIFT, for Kentucky projects identified through OKI's planning process. Coordination with local officials to identify priority projects for SHIFT. (ongoing)
- 2) Participation in planning studies and activities as appropriate. Assistance to local governments regarding the LPA process and the requirements for administration of federal aid projects. Participation in Statewide Planning meetings and other professional development activities with a focus on Kentucky transportation. Participation in various transportation studies across the Northern Kentucky region (ongoing)
- 3) OKI will work with KYTC and/or contractors to collect classified traffic volumes and/or pedestrian data in northern Kentucky as resources permit. (as needed)
- 4) Updated Boone County Transportation Plan (12/25)
- 5) Updated Kenton County Transportation Plan (12/26)

695 – UNIFIED PLANNING WORK PROGRAM

GOAL

Development of the agency Unified Planning Work Program (UPWP) and progress reporting.

PRODUCTS

- 1) FY25 Annual Performance and Expenditure Report (9/25)
- 2) FY26 Monthly progress reports
- 3) FY27 UPWP (Draft: 3/26; Final: 5/26)

697.1 – TRANSPORTATION PROGRAM REPORTING

GOAL

To provide the public and funding agencies with a yearly transportation report summarizing the major activities of the transportation planning process.

PRODUCT

Transportation Annual Summary (4/26)

720.1 – MOBILE SOURCE EMISSIONS PLANNING

GOAL

To ensure that OKI's Metropolitan Transportation Plan (MTP) and Transportation Improvement Program (TIP) contribute to the region's attainment and maintenance of national ambient air quality standards (NAAQS).

PRODUCTS

- 1) Coordination and consultation with OKI committees, federal, state and local agencies regarding air quality issues. Preparation of appropriate documentation of Metropolitan Transportation Plan and TIP conformity. Provision of travel and mobile source emission data to support SIP revisions prompted by changes in local emission control programs and federal standards for ozone and particulate matter. (ongoing)
- 2) Quantification of the expected air quality benefits of candidate projects for CMAQ, SNK, STBG, or STBG-TA funding. (as required)
- 3) A conforming MTP and TIP. (ongoing)

710.1 - LOCAL WATER QUALITY ACTIVITIES

GOAL

To undertake water quality planning activities in Ohio, Kentucky and Indiana, as appropriate and as resources permit.

PRODUCTS

- 1) Collateral materials for southwestern Ohio, northern Kentucky, and Dearborn County watershed management activities, which may include education and outreach materials, fact sheets, directories, and articles in stakeholder newsletters. (as appropriate)
- 2) Meeting notices, agendas, summaries, and related correspondence. (as appropriate)
- 3) Meeting notices, agendas, summaries, and related correspondence for the OKI RCC Annual meeting occurring in the spring and support, as needed, for the annual tour occurring in the fall.
- 4) Updated base information and recommendations for the OKI Regional Water Quality Management Plan. (within resource constraints)

710.2 – REGIONAL WATER STUDY (OEPA and ODNR)

GOAL

To support Ohio EPA and their partners and consultants as they develop a Southwest Ohio Regional Water Study by providing data to be used to analyze and forecast water needs for OKI counties Butler, Clermont, Hamilton and Warren along with best data available for Adams, Brown, Clinton and Highland Counties.

PRODUCTS

- 1-4) Reports, maps, data provided to Ohio EPA as detailed in OKI's contract with Ohio EPA. (as appropriate)
- 5) Participation in regular project meetings (as needed)

710.6 - WATER QUALITY PROGRAM (OEPA)

GOAL

To assess, manage, and protect surface water and groundwater resources in view of regional growth and development and the resultant increased demand.

PRODUCTS

- 1) Summary of consultations with Ohio EPA on WQMP priorities. (ongoing)
- 2) Summary of consultations with watershed organizations about water quality issues and planning needs. (as necessary)
- 3) Summary of consultations with wastewater management agencies about planning needs and plan amendments. (as necessary)
- 4) Updated Water Quality Management Plan and associated plan amendments. (as necessary)
- 5) Data and analysis, summary information, maps and descriptive text generated for the targeted water quality improvement project as detailed in OKI's contract with Ohio EPA. (6/25)

710.9 - WATER QUALITY PROGRAM (OHIO GENERAL ASSEMBLY)

GOAL

To assess, manage, and protect surface water and groundwater resources in view of regional growth and development and the resultant increased demand.

PRODUCTS

- 1) Water Quality Management Plan amendments. (as appropriate)
- 2) Permit consistency reviews, associated plan amendments when needed and public information products as detailed in OKI's contract with Ohio EPA. (as appropriate)
- 3) Reports provided to Ohio EPA as detailed in OKI's contract with Ohio EPA. (as appropriate)

711.2 CLIMATE POLLUTION REDUCTION GRANT PROGRAM (USEPA)

GOAL

To develop a Comprehensive Climate Action Plan (CCAP), and a Status Report for the Cincinnati OH-KY-IN MSA (Cincinnati MSA or MSA) as required by the US Environmental Protection Agency (USEPA) Climate Pollution Reduction Grant (CPRG) Program.

PRODUCTS

- 1) Subrecipient agreements and summary of work tasks completed by partner agencies.
- 2) Vendor agreements and summary of work tasks completed by contracted service providers.
- 3) Data and analysis, summary information, maps and descriptive text generated for the stakeholder and public input events.
- 4) Content for CCAP to be fully submitted to USEPA in FY26
- 5) Quarterly status reports (7/25, 10/25, 1/26, 4/26)

800 - REGIONAL PLANNING ACTIVITIES

GOAL

To provide support for sustainable development through planning services, data resources, and other information useful to the government, business, and civic sectors in the OKI region. When deemed advantageous to the region, to provide contributed services to leverage additional funding for programs that advance regional planning objectives of the OKI Strategic Regional Policy Plan or Metropolitan Transportation Plan.

PRODUCTS

- 1) Provision of various services, products, and information. (as appropriate)
- 2) Analyses of national and regional land development trends, conditions, and issues; and technical assistance on issues including land use, zoning, economic development, housing, water and sewer infrastructure, intergovernmental coordination, capital budgeting, and natural systems. (ongoing)
- 3) Support services for the Regional Planning Forum activities. (as appropriate)
- 4) Meeting agendas and related correspondence regarding Planning Directors' Network activities. (as appropriate)
- 5) Course materials and memos summarizing any instruction or support provided. (as appropriate)

APPENDIX A

BUDGET



RATIONALE FOR FUNDING

The objective of the Unified Planning Work Program (UPWP) process is to provide a rational basis for the development, review, approval, execution and control of a comprehensive and coordinated transportation planning program for the OKI Region.

A number of federal, state and local organizations contribute funds to the program. Partner agencies are also recipients of these funds and have the responsibility of completing the described program activities. The UPWP compiles the various resources, needs, interests, and responsibilities into a coordinated annual work program.

The first phase of the process is a determination of what work elements are to be included in the UPWP. This is based upon (1) new federal and state directions and directives, (2) continuing requirements, and (3) local needs, interests and priorities.

Following an evaluation of which elements best serve the needs of the region, while at the same time fulfilling the agency's objectives, a comparison of joint interest and the benefits that will be derived is made. Based on the output of this process, a funding table is prepared for inclusion in the UPWP. The funding agencies, in their review of the work program, make a determination of the appropriate level of funding and source of funds. Comments or requests for changes are then incorporated into a revised UPWP. Throughout the process, the basic premise of maintaining a regional, continuing, cooperative and comprehensive planning process prevails.

The FY 2026 UPWP reflects selectivity in the allocation of funding sources to program activities. This procedure and the subsequent matching of funding sources to program activities reflect consideration of:

- Amount of resources available from each agency;
- Primary interest area of each funding agency;
- Potential for delays in funding by each funding agency;
- Primary interest and type of each recipient agency; and
- Desirability of maintaining a single funding arrangement for each grouping of work activities.

In summary, while it is administratively necessary and advantageous to selectively match funding sources with work activities or groupings, the basic philosophical intent is to maintain a single integrated comprehensive and coordinated transportation planning program that jointly serves the needs of local, state and federal interests.

Work Performance Responsibility

All work is performed by staff except where indicated. OKI may contract with consulting firms using OKI's procurement procedures which are consistent with 2 CFR 200 Uniform Administrative Requirements, Cost Principles, and Audit Requirements for Federal Awards. Consultants provide access to additional resources and expertise. Elements utilizing consultants are identified in the text of that element. The budgeted amounts are identified within the following budget tables.

**OHIO KENTUCKY INDIANA REGIONAL COUNCIL OF GOVERNMENTS
FY 2026 UNIFIED PLANNING WORK PROGRAM
TABLE 1 ALL ACTIVITIES BY COST OBJECTIVE AND DIRECT COST CATEGORY**

Work Element	SOURCE	Personnel	Consultant	Marketing	Special Purchase	Other Direct	Indirect & Fringes	Total Work Cost	Recipient Match / Contributed Services	Total Project
TRANSPORTATION PLANNING										
601	Short Range									
601	Short Range Planning									
601.1	FY 2026 CPG	CPG	27,295			278	48,427	76,000		76,000
601.1	¹ FY 2025 CPG Carryover	CPG	7,913			47	14,040	22,000		22,000
602	TIP									
602	Transportation Improvement Program									
602.1	FY 2026 CPG	CPG	89,533			1,615	158,852	250,000		250,000
602.1	¹ FY 2025 CPG Carryover	CPG	16,187			93	28,720	45,000		45,000
605	Continuing Planning-Surveillance									
605	Continuing Planning - Surveillance									
605.1	FY 2026 CPG	CPG	768,229			168,860	1,363,024	2,300,113		2,300,113
605.1	¹ FY 2025 CPG Carryover	CPG	212,503			17,464	377,033	607,000		607,000
605.6	FY 2026 Raven 911	Local	10,750			178	19,072	30,000		30,000
610	Transportation Plan									
610	Transportation Plan									
610.1	Transportation Plan									
610.1	FY 2026 CPG	CPG	501,688			29,463	890,115	1,421,266		1,421,266
610.1	¹ FY 2025 CPG Carryover	CPG	232,413			33,229	412,358	678,000		678,000
610.4	Land Use Planning									
610.4	FY 2026 STBG (ODOT PID #118932)	STBG	274,524			17,879	487,073	779,476		779,476
610.5	Fiscal Impact Analysis									
610.5	FY 2026 STBG (ODOT PID #118927)	STBG	26,381			0	46,806	73,187		73,187

OHIO KENTUCKY INDIANA REGIONAL COUNCIL OF GOVERNMENTS
FY 2026 UNIFIED PLANNING WORK PROGRAM
TABLE 1 ALL ACTIVITIES BY COST OBJECTIVE AND DIRECT COST CATEGORY

	Work Element	SOURCE	Personnel	Consultant	Marketing	Special Purchase	Other Direct	Indirect & Fringes	Total Work Cost	Recipient Match / Contributed Services	Total Project
625	Services										
625	Services										
625.2	FY 2026 CPG	CPG	176,000	10,720			1,014	312,266	500,000		500,000
625.2 ¹	FY 2025 CPG Carryover	CPG	62,453				2,740	110,807	176,000		176,000
665	Special Studies										
665	Special Studies										
665.4	Regional Clean Air Program (FY26 ODOT PID #118936) FY 2026 ODOT CMAQ / KY SNK	CMAQ/STBGP	16,095		160,000		35	28,557	204,687	10,750	215,437
667	Rideshare Activities										
667	Rideshare Activities										
667.1	Rideshare Program (FY26 ODOT PID #118938) FY 2026 ODOT CMAQ / KY SNK	CMAQ/STBG	13,984		165,000		9,936	24,811	213,731	11,225	224,956
674	Transit										
674	Transit										
674.3	Transit Planning Activities (5310) FFY22-23 <small>(24-23-674.3)</small>	FTA	80,973				22,360	143,667	247,000		247,000
674.4	Transit Planning Activities (5310) FFY18-19 PT <small>(21-23-674.4)</small>	FTA		164,985					164,985	41,246	206,231
674.4	Transit Planning Activities (5310) FFY21-22 PT <small>(23-23-674.4)</small>	FTA		720,922					720,922	180,231	901,153
674.4	Transit Planning Activities (5310) FFY22-23 PT <small>(24-23-674.4)</small>	FTA		299,200					299,200	74,800	374,000
674.4	Transit Planning Activities (5310) FFY23-24 PT <small>(25-23-674.4)</small>	FTA		1,291,546					1,291,546	322,886	1,614,432
674.5	Transit Planning Activities (5310) FFY19-21 PT <small>(22-23-674.5)</small>	FTA/RF		569,472					569,472		569,472

**OHIO KENTUCKY INDIANA REGIONAL COUNCIL OF GOVERNMENTS
FY 2026 UNIFIED PLANNING WORK PROGRAM
TABLE 1 ALL ACTIVITIES BY COST OBJECTIVE AND DIRECT COST CATEGORY**

	Work Element	SOURCE	Personnel	Consultant	Marketing	Special Purchase	Other Direct	Indirect & Fringes	Total Work Cost	Recipient Match / Contributed Services	Total Project
684	Ohio Exclusive										
684	Ohio Exclusive										
684.3	Transportation Planning Activities FY2026	CPG	0	294,285			460	0	294,745		294,745
684.3	Transportation Planning Activities FY2025 Carryover	CPG	0	215,000				0	215,000		215,000
685	Indiana Exclusive										
685	Indiana Exclusive										
685.5	FY2026 SPR - Dearborn County (INDOT)	SPR	25,997				2,878	46,125	75,000		75,000
686	Kentucky Exclusive										
686	Kentucky Exclusive										
686.1	KY Discretionary PL-Kenton Co. Trans. Plan Update FY2026	PL Disc	8,716	225,400			420	15,464	250,000		250,000
686.2	KY Discretionary PL-Boone Co. Trans. Plan Update FY2025 Carryover	PL Disc	10,490	15,670				18,611	44,771		44,771
686.3	Transportation Planning Activities FY2026	PL/FTA	14,363				1,592	25,484	41,440		41,440
695	UPWP Administration										
695	UPWP Administration										
695.1	FY 2026 CPG	CPG	16,219				4	28,777	45,000		45,000
695.1 ¹	FY 2025 CPG Carryover	CPG	6,488				1	11,511	18,000		18,000
697	Trans Program Reporting										
697	Transportation Program Reporting										
697.1	FY 2026 CPG	CPG	10,801				35	19,164	30,000		30,000
697.1	FY 2025 CPG Carryover	CPG	1,766				0	3,134	4,900		4,900

OHIO KENTUCKY INDIANA REGIONAL COUNCIL OF GOVERNMENTS
FY 2026 UNIFIED PLANNING WORK PROGRAM
TABLE 1 ALL ACTIVITIES BY COST OBJECTIVE AND DIRECT COST CATEGORY

	Work Element	SOURCE	Personnel	Consultant	Marketing	Special Purchase	Other Direct	Indirect & Fringes	Total Work Cost	Recipient Match / Contributed Services	Total Project
720	Air Quality										
720	Mobile Source Emissions Planning										
720.1	FY 2026 CPG	CPG	14,381				104	25,515	40,000		40,000
720.1	¹ FY 2025 CPG Carryover	CPG	1,370				0	2,430	3,800		3,800
675	Mass Transit Exclusive										
	Southwest Ohio Regional Transit Authority (SORTA)										
	Transit Authority of Northern Kentucky (TANK)				See Table 7, Page A-17						
	Middletown Transit Service (MTS)										
	Clermont Transportation Connection (CTC)										
	Butler County Regional Transit Authority (BCRTA)										
	Warren County Transit Service										
	TRANSPORTATION PLANNING SUB TOTAL		<u>2,627,512</u>	<u>3,807,200</u>	<u>325,000</u>	<u>0</u>	<u>310,685</u>	<u>4,661,843</u>	<u>11,732,240</u>	<u>641,138</u>	<u>12,373,378</u>
710	Water Quality										
710	Ohio EPA Program										
710.2	FY2026 Ohio DNR	OEPA	27,034				0	47,966	75,000		75,000
710.6	FY2026 604 (b) - Core	OEPA	38,592				250	68,472	107,314		107,314
710.9	FY2026 Ohio General Assembly Funds - Core	OEPA	26,958				212	47,830	75,000		75,000
710.1	FY2026 Local Funded Water Activities	OKI	24,302				2,579	43,119	70,000		70,000
711.2	FY2024 US EPA CPRG - Plan	US EPA	40,699				151,500	72,210	264,409		264,409
	REGIONAL PLANNING										
800	Regional Planning Activities										
800	Regional Planning Activities										
800.1	FY2026 Local Funded Regional Planning Activities	OKI	25,017				596	44,387	70,000		70,000
	NON-TRANSPORTATION PLANNING SUB TOTAL		<u>182,603</u>	<u>0</u>	<u>0</u>	<u>0</u>	<u>155,137</u>	<u>323,983</u>	<u>661,723</u>	<u>0</u>	<u>661,723</u>
	FY 2026 Totals		<u>2,810,116</u>	<u>3,807,200</u>	<u>325,000</u>	<u>0</u>	<u>465,822</u>	<u>4,985,825</u>	<u>12,393,963</u>	<u>641,138</u>	<u>13,035,101</u>

¹ FY25 ODOT CPG carryover funds to be partnered with FY26 KYTC funds

GOVERNMENTS
FY 2026 UNIFIED PLANNING WORK PROGRAM
TABLE 2 CPG (PL/FTA) BY COST OBJECTIVE AND FUNDING SOURCE

Work Element	Total Work Cost (from Table 1)	Other Funding	Ohio Totals	Ohio Federal	Ohio Match	Ohio Local	Kentucky Totals	Kentucky PL	Kentucky KYTC Match	Kentucky FTA 5303	Kentucky Local	Indiana Totals	Indiana PL	Indiana Local
FY 2026 CPG Activities	100.0000%		78.9923%	80.0000%	10.0000%	10.0000%	21.0077%	61.4217%	7.6777%	18.5783%	12.3223%			
FY 2025 Carryover CPG Activities	100.0000%		78.9923%	80.0000%	10.0000%	10.0000%	21.0077%	61.4217%	7.6777%	18.5783%	12.3223%			
Ohio Exclusive CPG Activities	100.0000%		100.0000%	80.0000%	10.0000%	10.0000%								
Kentucky Exclusive PL/FTA Activities	100.0000%						100.0000%	61.4217%	7.6777%	18.5783%	12.3223%			
Kentucky Discretionary PL	100.0000%						100.0000%	80.0000%			20.0000%			
5310 (FTA)			100.0000%	100.0000%										
601 Short Range														
601 Short Range Planning														
601.1 FY 2026 CPG (FY26 CPG Section 11206 activities)	76,000		60,034	48,027	6,003	6,003	15,966	9,806	1,226	2,966	1,967			
601.1 FY 2025 CPG Carryover	22,000		17,378	13,903	1,738	1,738	4,622	2,839	355	859	569			
602 TIP														
602 Transportation Improvement Program														
602.1 FY 2026 CPG	250,000		197,481	157,985	19,748	19,748	52,519	32,258	4,032	9,757	6,472			
602.1 FY 2025 CPG Carryover	45,000		35,547	28,437	3,555	3,555	9,453	5,806	726	1,756	1,165			
605 Continuing Planning-Surveillance														
605 Continuing Planning - Surveillance														
605.1 FY 2026 CPG	2,300,113		1,816,912	1,453,530	181,691	181,691	483,201	296,790	37,099	89,771	59,541			
605.1 FY 2025 CPG Carryover	607,000		479,483	383,587	47,948	47,948	127,517	78,323	9,790	23,690	15,713			
605.6 FY 2026 Raven 911	30,000	30,000												
610 Transportation Plan														
610 Transportation Plan														
610.1 Transportation Plan														
610.1 FY 2026 CPG	1,421,266		1,122,690	898,152	112,269	112,269	298,575	183,390	22,924	55,470	36,791			
610.1 FY 2025 CPG Carryover	678,000		535,568	428,454	53,557	53,557	142,432	87,484	10,936	26,461	17,551			
625 Services														
625 Services														
625.2 FY 2026 CPG	500,000		394,961	315,969	39,496	39,496	105,039	64,516	8,065	19,514	12,943			
625.2 FY 2025 CPG Carryover	176,000		139,026	111,221	13,903	13,903	36,974	22,710	2,839	6,869	4,556			
695 UPWP Administration														
695 UPWP Administration														
695.1 FY 2026 CPG	45,000		35,547	28,437	3,555	3,555	9,453	5,806	726	1,756	1,165			
695.1 FY 2025 CPG Carryover	18,000		14,219	11,375	1,422	1,422	3,781	2,323	290	703	466			

GOVERNMENTS
FY 2026 UNIFIED PLANNING WORK PROGRAM
TABLE 2 CPG (PL/FTA) BY COST OBJECTIVE AND FUNDING SOURCE

Work Element	Total Work Cost (from Table 1)	Other Funding	Ohio Totals	Ohio Federal	Ohio Match	Ohio Local	Kentucky Totals	Kentucky PL	Kentucky KYTC Match	Kentucky FTA 5303	Kentucky Local	Indiana Totals	Indiana PL	Indiana Local
FY 2026 CPG Activities	100.0000%		78.9923%	80.0000%	10.0000%	10.0000%	21.0077%	61.4217%	7.6777%	18.5783%	12.3223%			
FY 2025 Carryover CPG Activities	100.0000%		78.9923%	80.0000%	10.0000%	10.0000%	21.0077%	61.4217%	7.6777%	18.5783%	12.3223%			
Ohio Exclusive CPG Activities	100.0000%		100.0000%	80.0000%	10.0000%	10.0000%								
Kentucky Exclusive PL/FTA Activities	100.0000%						100.0000%	61.4217%	7.6777%	18.5783%	12.3223%			
Kentucky Discretionary PL	100.0000%						100.0000%	80.0000%			20.0000%			
5310 (FTA)			100.0000%	100.0000%										
697 Trans Program Reporting														
697 Transportation Program Reporting														
697.1 FY 2026 CPG	30,000		23,698	18,958	2,370	2,370	6,302	3,871	484	1,171	777			
697.1 ¹ FY 2025 CPG Carryover	4,900		3,871	3,096	387	387	1,029	632	79	191	127			
720 Air Quality														
720 Mobile Source Emissions Planning														
720.1 FY 2026 CPG	40,000		31,597	25,278	3,160	3,160	8,403	5,161	645	1,561	1,035			
720.1 ¹ FY 2025 CPG Carryover	3,800		3,002	2,401	300	300	798	490	61	148	98			
684 Ohio Exclusive														
684.3 Transportation Planning Activities FY2026	294,745		294,745	235,796	29,475	29,475								
684.3 Transportation Planning Activities FY2025 Carryover	215,000		215,000	172,000	21,500	21,500								
686 Kentucky Exclusive														
686.3 Transportation Planning Activities FY2026	41,440						41,440	25,453	3,182	7,699	5,106			
Sub-Total - Regional Totals	6,798,263	30,000	5,420,758	4,336,607	542,076	542,076	1,347,505	827,661	103,458	250,344	166,043			
SOURCE OF FUNDS														
FY2026 CPG - ODOT	4,998,563		3,977,665	3,182,132	397,767	397,767	1,020,898	627,053	78,382	189,666	125,798			
FY2025 CPG Carryover - ODOT	1,769,700		1,443,093	1,154,475	144,309	144,309	326,607	200,607	25,076	60,678	40,245			
FY2026 OKI Raven 911	30,000	30,000												
	6,798,263	30,000	5,420,758	4,336,607	542,076	542,076	1,347,505	827,661	103,458	250,344	166,043			
FY2026 Carrying into FY2027	(1,751,961)		(1,383,914)	(1,107,131)	(138,391)	(138,391)	(368,047)	(226,061)	(28,258)	(68,377)	(45,352)			
FY2026 PL/FTA - KYTC							979,458	601,600	75,200	181,967	120,692			
<u>KYTC FY26 PL Funding Summary</u>														
601.1 Short Range Planning							16,707	10,261	1,283	3,104	2,059			
602.1 Transportation Improvement Program							58,255	35,781	4,473	10,823	7,178			
605.1 Continuing Planning - Surveillance							522,754	321,084	40,136	97,119	64,415			
610.1 Transportation Plan							257,356	158,072	19,759	47,812	31,712			
625.2 Services							63,305	38,883	4,860	11,761	7,801			
695.1 UPWP Administration							8,924	5,481	685	1,658	1,100			
697.1 Transportation Program Reporting							5,688	3,494	437	1,057	701			
720.1 Mobile Source Emissions Planning							5,031	3,090	386	935	620			
686.3 Transportation Planning Activities FY2026							41,440	25,453	3,182	7,699	5,106			
							979,459	601,600	75,200	181,967	120,692			

GOVERNMENTS
FY 2026 UNIFIED PLANNING WORK PROGRAM
TABLE 2 CPG (PL/FTA) BY COST OBJECTIVE AND FUNDING SOURCE

Work Element	Total Work Cost (from Table 1)	Other Funding	Ohio Totals	Ohio Federal	Ohio Match	Ohio Local	Kentucky Totals	Kentucky PL	Kentucky KYTC Match	Kentucky FTA 5303	Kentucky Local	Indiana Totals	Indiana PL	Indiana Local
FY 2026 CPG Activities	100.0000%		78.9923%	80.0000%	10.0000%	10.0000%	21.0077%	61.4217%	7.6777%	18.5783%	12.3223%			
FY 2025 Carryover CPG Activities	100.0000%		78.9923%	80.0000%	10.0000%	10.0000%	21.0077%	61.4217%	7.6777%	18.5783%	12.3223%			
Ohio Exclusive CPG Activities	100.0000%		100.0000%	80.0000%	10.0000%	10.0000%								
Kentucky Exclusive PL/FTA Activities	100.0000%						100.0000%	61.4217%	7.6777%	18.5783%	12.3223%			
Kentucky Discretionary PL	100.0000%						100.0000%	80.0000%			20.0000%			
5310 (FTA)			100.0000%	100.0000%										
686 Kentucky Exclusive														
686.1 KY Discretionary PL-Kenton Co. Trans. Plan Update FY2026	250,000						250,000	200,000	0	0	50,000			
686.2 KY Discretionary PL-Boone Co. Trans. Plan Update FY2025 Carryover	44,771						44,771	35,817	0	0	8,954			
674 Transit														
674.3 Transit Planning Activities (5310) FFY22-23 (24-23-674.3)	247,000	0	247,000	247,000										
674.4 ² Transit Planning Activities (5310) FFY18-19 PT (21-23-674.4)	164,985	41,246	164,985	164,985										
674.4 ² Transit Planning Activities (5310) FFY21-22 PT (23-23-674.4)	720,922	180,231	720,922	720,922										
674.4 ² Transit Planning Activities (5310) FFY22-23 PT (24-23-674.4)	299,200	74,800	299,200	299,200										
674.4 ² Transit Planning Activities (5310) FFY23-24 PT (25-23-674.4)	1,291,546	322,886	1,291,546	1,291,546										
674.5 Transit Planning Activities (5310) FFY19-21 PT (22-23-674.5)	569,472	0	569,472	569,472										
TOTAL PL/FTA/STATE FUNDED	10,386,159	649,163	8,713,883	7,629,732	542,076	542,076	1,642,276	1,063,478	103,458	250,344	224,997	0	0	0
Anticipated OH FY26 funding carried to FY27 - not funded by KYTC until FY27	(368,047)						(368,047)	(226,061)	(28,258)	(68,377)	(45,352)			
KYTC FY26 Funding							1,274,229	837,417	75,200	181,967	179,646			
	10,018,113	649,163	8,713,883	7,629,732	542,076	542,076	1,274,229	837,417	75,200	181,967	179,646	0	0	0
SOURCE OF FUNDS														
FY2026 CPG - ODOT	3,977,665		3,977,665	3,182,132	397,767	397,767								
FY2025 CPG Carryover - ODOT	1,443,093		1,443,093	1,154,475	144,309	144,309								
FY2026 OKI Raven 911	30,000	30,000												
Transit Planning Activities (5310) FFY22-23 (24-23-674.3)	247,000	0	247,000	247,000										
² Transit Planning Activities (5310) FFY18-19 PT (21-23-674.4)	164,985	41,246	164,985	164,985										
² Transit Planning Activities (5310) FFY21-22 PT (23-23-674.4)	720,922	180,231	720,922	720,922										
² Transit Planning Activities (5310) FFY22-23 PT (24-23-674.4)	299,200	74,800	299,200	299,200										
² Transit Planning Activities (5310) FFY23-24 PT (25-23-674.4)	1,291,546	322,886	1,291,546	1,291,546										
² Transit Planning Activities (5310) FFY19-21 PT (22-23-674.5)	569,472	0	569,472	569,472										
FY2026 PL - KYTC	752,000						752,000	601,600	75,200	0	75,200			
FY2025 Discretionary PL	294,771						294,771	235,817	0	0	58,954			
FY2026 FTA 5303 - KYTC	227,458						227,458	0	0	181,966	45,492			
	10,018,112	649,163	8,713,883	7,629,732	542,076	542,076	1,274,229	837,417	75,200	181,966	179,646	0	0	0

¹ FY2025 ODOT CPG carryover funds to be partnered with FY26 KYTC funds

² FTA Pass Through projects matched with recipient match or contributed services

**OHIO KENTUCKY INDIANA REGIONAL COUNCIL OF GOVERNMENTS
FY 2026 UNIFIED PLANNING WORK PROGRAM
TABLE 3 OTHER TRANSPORTATION BY COST OBJECTIVE AND FUNDING SOURCE**

Work Element		Total Work Cost	Toll Credits & Contributed Services	Total Project
FY 2026 STBG Funded Projects				
FY 2026 Regional Clean Air Program				
FY 2026 Rideshare Activities				
FY 2026 Indiana SRP Exclusive				
610 Transportation Plan				
610.4 Land Use Planning				
610.4 ¹ FY 2026 STBG (ODOT PID #118932)	STBG	779,476		779,476
610.5 Fiscal Impact Analysis				
610.5 ¹ FY 2026 STBG (ODOT PID #118927)	STBG	73,187		73,187
665 Special Studies				
665.4 Regional Clean Air Program (FY26 ODOT PID #118936)				
^{1,2} FY 2026 ODOT CMAQ / KY SNK	CMAQ/SNK	204,687	10,750	215,437
667 Rideshare Activities				
667.1 Rideshare Program (FY26 ODOT PID #118938)				
² FY 2026 ODOT CMAQ / KY SNK	CMAQ/STBG	213,731	11,225	224,956
685 Indiana Exclusive				
685.5 FY2026 SPR - Dearborn County (INDOT)	SPR	75,000	0	75,000
TOTALS		1,346,081	21,975	1,368,056

¹ ODOT CMAQ and STBG funds provided at 100% with toll credits match.

² KYTC SNK funding matched with contributed services.

SOURCE OF FUNDS			Total
FY 2026 STBG/SNK FUNDS - Transportation	-----	-----	852,663
FY 2026 SPR FUNDS - Transportation	-----	-----	75,000
FY 2026 CMAQ (OH Clean Air)	-----	-----	161,687
FY 2026 SNK FUNDS (KY Clean Air)	-----	-----	53,750
FY 2026 CMAQ - (OH Rideshare)	-----	-----	168,831
FY 2026 SNK FUNDS (KY Rideshare)	-----	-----	56,125
			<u>1,368,056</u>

Ohio/ Federal Portion	Ohio/Fed State	ODOT match	Carryover Yes No	OKI DOT	CMAQ ATG	STBG Toll crs	Ohio Local	Kentucky Portion	Kentucky State	Carryover Yes No	OKI KYTC	CMAQ ATG	STBG Svs	Kentucky Local	Indiana Portion	Indiana State	Carryover Yes No	OKI INDOT	Indiana Local
78.9923%	100.00%						20.00%	21.0077%	80.00%					20.00%					
78.9923%	100.00%						0.00%	21.0077%	80.00%				x	20.00%					
78.9923%	100.00%							21.0077%	80.00%				x	20.00%					
															100.0000%	80.00%			20.00%
615,726 a	615,726		X X		X X			163,750 f	131,000	X X			X	32,750					
57,812 b	57,812		X X		X X			15,375 g	12,300	X X			X	3,075					
161,687 c	161,687		X X		X X			53,750 h	43,000	X X			X X	10,750					
168,831 d	168,831		X X		X			56,125 i	44,900	X X			X X	11,225					
															75,000	60,000	X	X X	15,000
1,004,056	1,004,056	0					0	289,000	231,200					57,800	75,000	60,000			15,000

OH Share	ODOT	OKI Local	KY Share	KYTC	OKI Local	INDOT	OKI Local
673,538 ^{a,b}	673,538	0	179,125 ^{e,f}	143,300	35,825	75,000	60,000
161,687 ^c	161,687	0	0				
168,831 ^d	168,831	0	53,750 ^g	43,000	10,750		
			56,125 ^h	44,900	11,225		
1,004,056	1,004,056	0	289,000	231,200	57,800	75,000	60,000

^{a,b} FY26 STBGP - LU (PID118932) \$615,726 w. TC + FIAM (PID 118927)

^c FY26 CMAQ Clean Air Program (PID 118936) \$161,687 w. TC

^d FY26 CMAQ Rideshare Program (PID118938) \$168,831

^{e,f} FY26 SNK Trans. Planning -- LU \$131,000 and FIAM \$12,300

^g FY26 SNK Regional Clean Air Program \$43,000 w. contributed services match

^h FY26 SNK RideShare \$44,900 w. contributed services match

^{**} for FY15 forward KYTC requested KYTC federal share of SNK/STBG programs be rounded to nearest \$100.

**OHIO KENTUCKY INDIANA REGIONAL COUNCIL OF GOVERNMENTS
FY 2026 UNIFIED PLANNING WORK PROGRAM
TABLE 4 OTHER PLANNING ACTIVITIES BY COST OBJECTIVE AND FUNDING SOURCE**

Work Element	Work Activity	Personnel	Consultant	Marketing	Special Purchase	Other Direct	Indirect & Fringes	Total Work Cost	Contributed Services	Total Project	O H	K Y	C I N	F E D	US EPA Federal	Ohio Federal	Other State Funds	OH Local OKI County	Duke local	Water Local	Contributed Services	OKI County Funds
	604(B) Program										x				100.00%							
	Ohio General Assembly funds										x					100.00%						
	Local Water Partners																		100.00%			
	Local Water Quality and Regional Planning Programs																					100.00%
	ENVIRONMENTAL PLANNING																					
710	Water Quality																					
710	Ohio EPA Program																					
710.2	FY2026 Ohio DNR	OEPA	27,034		0	0	0	47,966	75,000	75,000	x						75,000					
710.6	FY2026 604 (b) - Core	OEPA	38,592		0	0	250	68,472	107,314	107,314	x		x		107,314							
710.9	FY2026 Ohio General Assembly Funds - Core	OEPA	26,958		0	0	212	47,830	75,000	75,000	x						75,000					
710.1	FY2026 Local Funded Water Activities	OKI	24,302		0	0	2,579	43,119	70,000	70,000												70,000
711.2	FY2024 US EPA CPRG - Plan	US EPA	40,699	0	0	0	151,500	72,210	264,409	264,409				x	264,409							
	REGIONAL PLANNING																					
800	Regional Planning Activities																					
800.1	FY2026 Local Funded Regional Planning Activities	OKI	25,017	0	0	0	596	44,387	70,000	70,000												70,000
			182,603	0	0	0	155,137	323,983	661,723	0					264,409	107,314	150,000	0	0	0	0	140,000

**OHIO KENTUCKY INDIANA REGIONAL COUNCIL OF GOVERNMENTS
FY 2026 UNIFIED PLANNING WORK PROGRAM
TABLE 5 - HOURS**

Work Element	Personnel Cost (From Tbl 1)	Estimated Hourly Rate	Estimated Personnel Hours	Estimated OH Trans Personnel Hours 78.9923%	Estimated KY Trans Personnel Hours 21.0077%	Estimated IN Trans Personnel Hours 100.0000%	Estimated FTA Personnel Hours 100.0000%	Estimated Local Water Personnel Hours 100.0000%	Estimated US EPA Personnel Hours 100.0000%	Estimated OH Water Personnel Hours 100.0000%	Estimated OKI Personnel Hours 100.0000%
TRANSPORTATION PLANNING											
601 Short Range											
601 Short Range Planning											
601.1 FY 2026 CPG	27,295	49	559	442	117						
601.1 FY 2025 CPG Carryover	7,913	49	162	128	34						
602 TIP											
602 Transportation Improvement Program											
602.1 FY 2026 CPG	89,533	62	1,434	1,133	301						
602.1 FY 2025 CPG Carryover	16,187	62	259	205	54						
605 Continuing Planning-Surveillance											
605 Continuing Planning - Surveillance											
605.1 FY 2026 CPG	768,229	48	15,925	12,579	3,345						
605.1 FY 2025 CPG Carryover	212,503	48	4,405	3,480	925						
605.6 FY 2026 Raven 911	10,750	46	233								233
610 Transportation Plan											
610 Transportation Plan											
610.1 Transportation Plan											
610.1 FY 2026 CPG	501,688	68	7,361	5,815	1,546						
610.1 FY 2025 CPG Carryover	232,413	68	3,410	2,694	716						
610.4 Land Use Planning											
610.4 FY 2026 STBG (ODOT PID #118932)	274,524	43	6,317	4,990	1,327						
610.5 Fiscal Impact Analysis											
610.5 FY 2026 STBG (ODOT PID #118927)	26,381	46	574	453	121						

**OHIO KENTUCKY INDIANA REGIONAL COUNCIL OF GOVERNMENTS
FY 2026 UNIFIED PLANNING WORK PROGRAM
TABLE 5 - HOURS**

Work Element	Personnel Cost (From Tbl 1)	Estimated Hourly Rate	Estimated Personnel Hours	Estimated OH Trans Personnel Hours 78.9923%	Estimated KY Trans Personnel Hours 21.0077%	Estimated IN Trans Personnel Hours 100.0000%	Estimated FTA Personnel Hours 100.0000%	Estimated Local Water Personnel Hours 100.0000%	Estimated US EPA Personnel Hours 100.0000%	Estimated OH Water Personnel Hours 100.0000%	Estimated OKI Personnel Hours 100.0000%
625 Services											
625 Services											
625.2 FY 2026 CPG	176,000	38	4,583	3,620	963						
625.2 FY 2025 CPG Carryover	62,453	38	1,626	1,285	342						
665 Special Studies											
665.4 Regional Clean Air Program (FY26 ODOT PID #118936) FY 2026 ODOT CMAQ / KY SNK	16,095	38	421	333	89						
667 Rideshare Activities											
667.1 Rideshare Program (FY26 ODOT PID #118938) FY 2026 ODOT CMAQ / KY SNK	13,984	38	366	289	77						
674 Transit											
674.3 Transit Planning Activities (5310) FFY22-23 (24-23-674.3)	80,973	48	1,694				1,694				
684 Ohio Exclusive											
684.3 Transportation Planning Activities FY2026	0										
684.3 Transportation Planning Activities FY2025 Carryover	0										
685 Indiana Exclusive											
685.5 FY2026 SPR - Dearborn County (INDOT)	25,997	63	412			412					
686 Kentucky Exclusive											
686.1 KY Discretionary PL-Kenton Co. Trans. Plan Update FY2026	8,716	45	195		195						
686.2 KY Discretionary PL-Boone Co. Trans. Plan Update FY2025	10,490	75	140		140						
686.3 Transportation Planning Activities FY2026	14,363	96	149		149						

**OHIO KENTUCKY INDIANA REGIONAL COUNCIL OF GOVERNMENTS
FY 2026 UNIFIED PLANNING WORK PROGRAM
TABLE 5 - HOURS**

Work Element	Personnel Cost (From Tbl 1)	Estimated Hourly Rate	Estimated Personnel Hours	Estimated OH Trans Personnel Hours 78.9923%	Estimated KY Trans Personnel Hours 21.0077%	Estimated IN Trans Personnel Hours 100.0000%	Estimated FTA Personnel Hours 100.0000%	Estimated Local Water Personnel Hours 100.0000%	Estimated US EPA Personnel Hours 100.0000%	Estimated OH Water Personnel Hours 100.0000%	Estimated OKI Personnel Hours 100.0000%
695 UPWP Administration											
695 UPWP Administration											
695.1 FY 2026 CPG	16,219	65	248	196	52						
695.1 FY 2025 CPG Carryover	6,488	65	99	78	21						
697 Trans Program Reporting											
697 Transportation Program Reporting											
697.1 FY 2026 CPG	10,801	44	248	196	52						
697.1 FY 2025 CPG Carryover	1,766	44	41	32	9						
720 Air Quality											
720 Mobile Source Emissions Planning											
720.1 FY 2026 CPG	14,381	56	256	202	54						
720.1 FY 2025 CPG Carryover	1,370	56	24	19	5						
675 Mass Transit Exclusive											
Southwest Ohio Regional Transit Authority (SORTA)											
Transit Authority of Northern Kentucky (TANK)											
Middletown Transit Service (MTS)											
Clermont Transportation Connection (CTC)											
Butler County Regional Transit Authority (BCRTA)											
Warren County Transit Service											
TRANSPORTATION PLANNING SUB TOTAL	2,627,512		51,143	38,169	10,635	412	1,694	0		0	233

**OHIO KENTUCKY INDIANA REGIONAL COUNCIL OF GOVERNMENTS
FY 2026 UNIFIED PLANNING WORK PROGRAM
TABLE 5 - HOURS**

Work Element	Personnel Cost (From Tbl 1)	Estimated Hourly Rate	Estimated Personnel Hours	Estimated OH Trans Personnel Hours 78.9923%	Estimated KY Trans Personnel Hours 21.0077%	Estimated IN Trans Personnel Hours 100.0000%	Estimated FTA Personnel Hours 100.0000%	Estimated Local Water Personnel Hours 100.0000%	Estimated US EPA Personnel Hours 100.0000%	Estimated OH Water Personnel Hours 100.0000%	Estimated OKI Personnel Hours 100.0000%			
ENVIRONMENTAL PLANNING														
710 Water Quality														
710 Ohio EPA Program														
710.2 FY2026 Ohio DNR	27,034	38	705							705				
710.6 FY2026 604 (b) - Core	38,592	27	1,421							1,421				
710.7 FY2026 Ohio General Assembly Funds - Core	26,958	31	877					877						
710.1 FY2026 Local Funded Water Activities	24,302	44	552								552			
711.2 FY2024 US EPA CPRG - Plan	40,699	41	996						996					
REGIONAL PLANNING														
800 Regional Planning Activities														
800.1 FY2026 Local Funded Regional Planning Activities	25,017	45	558								558			
NON-TRANSPORTATION PLANNING SUB TOTAL				182,603		5,108	0	0	0	0	877	996	2,126	1,110
FY 2025 Totals				2,810,116		56,251	38,169	10,635	412	1,694	877	996	2,126	1,343

**OHIO KENTUCKY INDIANA REGIONAL COUNCIL OF GOVERNMENTS
FY 2026 UNIFIED PLANNING WORK PROGRAM
TABLE 6 SUMMARY BUDGET**

OKI Fiscal Year 2026 UPWP Funding Distribution

Work Element	Summary -Budget	FY	Personnel Hours	OH PL	OH State	OH STBG	OH CMAQ	KY PL	KY State	KY SNK	KY FTA	IN SPR	FTA Federal	FRA Federal	US EPA Federal	OEPA Federal	OEPA State	OKI CS Match	OKI Local	cash sub-total	OH Credit	KY CS Match	Element Total
601.1	PL-Short Range Planning	25	162	\$ 13,903	\$ 1,738														\$ 1,738	\$ 17,378			\$ 17,378
601.1	PL-Short Range Planning	26	559	\$ 48,027	\$ 6,003			\$ 10,261	\$ 1,283		\$ 3,104								\$ 8,062	\$ 76,741			\$ 76,741
602.1	PL-TIP	25	259	\$ 28,437	\$ 3,555														\$ 3,555	\$ 35,547			\$ 35,547
602.1	PL-TIP	26	1,434	\$ 157,985	\$ 19,748			\$ 35,781	\$ 4,473		\$ 10,823								\$ 26,926	\$ 255,736			\$ 255,736
605.1	PL-Continuing Planning Surveillance	25	4,405	\$ 383,587	\$ 47,948														\$ 47,948	\$ 479,483			\$ 479,483
605.1	PL-Continuing Planning Surveillance	26	15,925	\$ 1,453,530	\$ 181,691			\$ 321,084	\$ 40,136		\$ 97,119								\$ 246,106	\$ 2,339,666			\$ 2,339,666
605.6	RAVEN 911	26	233																\$ 30,000	\$ 30,000			\$ 30,000
610.1	PL-Transportation Plan	25	3,410	\$ 428,454	\$ 53,557														\$ 53,557	\$ 535,568			\$ 535,568
610.1	PL-Transportation Plan	26	7,361	\$ 898,152	\$ 112,269			\$ 158,072	\$ 19,759		\$ 47,812		\$ 143,981						\$ 143,981	\$ 1,380,046			\$ 1,380,046
625.2	PL-Services	25	1,626	\$ 111,221	\$ 13,903														\$ 13,903	\$ 139,026			\$ 139,026
625.2	PL-Services	26	4,583	\$ 315,969	\$ 39,496			\$ 38,883	\$ 4,860		\$ 11,761								\$ 47,297	\$ 458,267			\$ 458,267
686.1	KY Discretionary PL - Boone Co. Trans. Plan Update FY2025	25	140					\$ 35,817											\$ 8,954	\$ 44,771			\$ 44,771
686.2	KY Discretionary PL - Kenton Co. Trans. Plan Update FY2026	26	195					\$ 200,000											\$ 50,000	\$ 250,000			\$ 250,000
684.3	OH Exclusive - Transportation Planning Activities FY2026	26		\$ 235,796	\$ 29,475														\$ 29,475	\$ 294,745			\$ 294,745
684.3	OH Exclusive - Transportation Planning Activities FY2025	25		\$ 172,000	\$ 21,500														\$ 21,500	\$ 215,000			\$ 215,000
686.3	KY Exclusive-Transportation Planning Activities	26	149					\$ 25,453	\$ 3,182		\$ 7,699								\$ 5,106	\$ 41,440			\$ 41,440
695.1	PL-UPWP	25	99	\$ 11,375	\$ 1,422														\$ 1,422	\$ 14,219			\$ 14,219
695.1	PL-UPWP	26	248	\$ 28,437	\$ 3,555			\$ 5,481	\$ 685		\$ 1,658								\$ 4,654	\$ 44,471			\$ 44,471
697.1	PL-Transportation Program	25	41	\$ 3,096	\$ 387														\$ 387	\$ 3,871			\$ 3,871
697.1	PL-Transportation Program	26	248	\$ 18,958	\$ 2,370			\$ 3,494	\$ 437		\$ 1,057								\$ 3,071	\$ 29,386			\$ 29,386
720.1	PL-Mobile Source Emissions	25	24	\$ 2,401	\$ 300														\$ 300	\$ 3,002			\$ 3,002
720.1	PL-Mobile Source Emissions	26	256	\$ 25,278	\$ 3,160			\$ 3,090	\$ 386		\$ 935								\$ 3,780	\$ 36,628			\$ 36,628
674.3	Transit Planning Activities (5310) FFY22-23 (24-23-674.3)	22-23	1,694										\$ 247,000						\$ -	\$ 247,000			\$ 247,000
674.4	Transit Planning Activities (5310) FFY18-19 PT (21-23-674.4)	17-19	0										\$ 164,985						\$ -	\$ 164,985			\$ 164,985
674.4	Transit Planning Activities (5310) FFY21-22 PT (23-23-674.4)	18-19	0										\$ 720,922						\$ -	\$ 720,922			\$ 720,922
674.4	Transit Planning Activities (5310) FFY22-23 PT (24-23-674.4)	21-22	0										\$ 299,200						\$ -	\$ 299,200			\$ 299,200
674.4	Transit Planning Activities (5310) FFY23-24 PT (25-23-674.4)	22-23	0										\$ 1,291,546						\$ -	\$ 1,291,546			\$ 1,291,546
674.4	Transit Planning Activities (5310) FFY19-21 PT (22-23-674.5)	19-21	0										\$ 569,472						\$ -	\$ 569,472			\$ 569,472
610.4	LRP-Land Use	26	6,317			\$ 615,726				\$ 131,000									\$ 32,750	\$ 779,476	x		\$ 779,476
610.5	Fiscal Impact Analysis Model	26	574			\$ 57,812				\$ 12,300									\$ 3,075	\$ 73,187	x		\$ 73,187
685.5	FY2026 SPR - Dearborn County (INDOT)	26	412									\$ 60,000							\$ 15,000	\$ 75,000			\$ 75,000
665.4	Regional Clean Air Program	26	421				\$ 161,687			\$ 43,000									\$ -	\$ 204,687	x	\$ 10,750	\$ 215,437
667.1	Rideshare Program	26	366				\$ 168,831			\$ 44,900									\$ -	\$ 213,731		\$ 11,225	\$ 224,956
710.2	FY2026 Ohio DNR	26	705														\$ 75,000		\$ -	\$ 75,000			\$ 75,000
710.6	OEPA 604b Program - Core	26	1,421													\$ 107,314			\$ -	\$ 107,314			\$ 107,314
710.9	OH General Assembly Funds - Core	26	877														\$ 75,000		\$ -	\$ 75,000			\$ 75,000
710.1	Local Funded Water Activities	26	552																\$ 70,000	\$ 70,000			\$ 70,000
711.2	US EPA CPRG - Plan	24	996												\$ 264,409				\$ -	\$ 264,409			\$ 264,409
800.1	Local Funded Regional Planning	26	558																\$ 70,000	\$ 70,000			\$ 70,000
	Total UPWP		56,251	\$ 4,336,607	\$ 542,076	\$ 673,538	\$ 330,518	\$ 837,417	\$ 75,200	\$ 231,200	\$ 181,967	\$ 60,000	\$ 3,293,125	\$ -	\$ 264,409	\$ 107,314	\$ 150,000	\$ -	\$ 942,546	\$ 12,025,917	\$ -	\$ 21,975	\$ 12,047,892

Table 7 - FY26 Transit Budget						
Cincinnati Metro						
Planning Activity	Federal		State	Local	Total	Completion Date
	5307 FTA	Other				
Walnut Hills Transit Center Planning (AoPP)		\$ 341,550		\$ 38,160	\$ 379,710	Q42025
SORTA Onboard Customer Service Study (AoPP)		\$ 363,545		\$ 91,455	\$ 455,000	ongoing
SORTA Long Range Transportation Plan			\$ 485,120	\$ 121,280	\$ 606,400	Q42026
Short Range Transit Service Plan				\$ 49,084	\$ 49,084	Q32025
Transit Authority of Northern Kentucky (TANK)						
Planning Activity	Federal		State	Local	Total	Completion Date
	5307 FTA	Other				
Transit Development Study	\$ 256,000		\$ 64,000		\$ 320,000	1/1/2026
Middletown Transit Service (MTS)						
Planning Activity	Federal		State	Local	Total	Completion Date
	5307 FTA	Other				
Planning concepts for the new/renovated Middletown Transit Station	\$ 67,500			\$ 16,875	\$ 84,375	12/31/2026
Clermont Transportation Connection (CTC)						
Planning Activity	Federal		State	Local	Total	Completion Date
	5307 FTA	Other				
Transit Planning Study	\$ 80,000		\$ 20,000		\$ 100,000	12/31/2025
Butler County Regional Transit Authority (BCRTA)						
Planning Activity	Federal		State	Local	Total	Completion Date
	5307 FTA	Other				
Advocate coordinated approach based on findings of studies, surveys, outreach	\$ 40,000			\$ 10,000	\$ 50,000	12/31/2026
Continued Local Coordination, detours, serv changes, roadway exp, closures, etc	\$ 40,000			\$ 10,000	\$ 50,000	12/31/2026
Planning concepts for Hamilton Transit Hub	\$ 112,500			\$ 28,125	\$ 140,625	12/31/2026
Studying the environmental impact of BCRTA operations	\$ 40,000			\$ 10,000	\$ 50,000	12/31/2026
Rideshare Study (AOPP)		\$ 125,000		\$ 31,250	\$ 156,250	12/31/2026
Study bike/trail/pedestrian infrastructure related to transit within the City of Oxford (AOPP)		\$ 150,000		\$ 16,667	\$ 166,667	12/31/2026
Transit Propensity Study	\$ 130,000			\$ 32,500	\$ 162,500	12/31/2026
Warren County Transit Service (WCTS)						
Planning Activity	Federal		State	Local	Total	Completion Date
	5307 FTA	Other				
5307 Planning	\$ 7,500			\$ 7,500	\$ 15,000	6/30/2025
City of Cincinnati (Streetcar)						
Planning Activity	Federal		State	Local	Total	Completion Date
	5307 FTA	Other				
Areas of Persistent Poverty (AoPP) Planning & Software to Advance Innovative Technologies		\$ 250,000		\$ 27,778	\$ 277,778	11/30/2026